



**FLOOR  
PREPARATION  
BROCHURE 2024**

Woodlands, South Hanningfield Road,  
South Hanningfield, Essex CM3 8HQ

**Tel: (01245) 403353**

**E: [natasha@seabrookdev.com](mailto:natasha@seabrookdev.com)**





## Contents

<u>Aerial Platforms</u>	Page 6	<u>Excavators</u>	Page 11
Genie GS-1932	Page 6	Hyundai 125 LCR-9A	Page 11
Genie GR-15	Page 6	JCB 85Z-1	Page 11
Genie GR-20	Page 6	JCB 67C-1	Page 11
Genie GS2668 RT	Page 6	Hyundai R272-9	Page 11
Genie GS-4046E	Page 7	JCB 19C-1	Page 12
Genie Z-45	Page 7	JCB 18Z-1	Page 12
JCB S3246E	Page 7	Takeuchi TB216 Hybrid	Page 12
JLG Toucan 800A	Page 7	Wacker Neuson 803	Page 12
JLG Toucan 1010	Page 8		
Nifty HR12	Page 8	<u>Dumpers</u>	Page 13
Skyjack SJ111-3226	Page 8	Thwaites MACH2066	Page 13
Upright X26N	Page 8	Wacker Neuson 4001	Page 13
		Wacker Neuson 3001	Page 13
<u>Forklifts</u>	Page 9	Ecovolve ED1000	Page 13
Doosan B25X-7	Page 9	JCB 1T-1	Page 14
Linde E25	Page 9		
Linde H25	Page 9	Bomag BW120 AD-5 Roller	Page 14
<u>Telehandlers</u>	Page 10		
JCB 525-60	Page 10		
JCB 535-125	Page 10		
JCB TLT 35D	Page 10		

TEL: 01245 403353

[www.seabrookdevelopments.com](http://www.seabrookdevelopments.com)



<u>Brokk Demolition Robots</u>	Page 15	<u>Other Floor Preparation</u>	Page 19
Brokk 160	Page 15	PPC 250 Electric Grinder	Page 19
SB202 Breaker	Page 15	SPE DFG250 Electric Grinder	Page 20
CC420 Concrete Crusher	Page 15	Preptec S3-B Vacuum	Page 20
Rockwheel TD-30	Page 15	PPC M450 Dust Extractor	Page 20
Brokk 110	Page 16	SPE 12ES Shot Blaster	Page 20
SB152 Breaker	Page 16	Preptec S210 40R Shot Blaster	Page 20
CC340 Concrete Crusher	Page 16	Magnet Sweeper	Page 21
Buckets (all Brokk Models)	Page 17	SPE BEF320 Scarifier	Page 21
		110v Scarifier	Page 21
<u>HTC Grinders</u>	Page 18		
HTC 650 RX	Page 18	*Datasheets available upon request	
HTC 420 VS	Page 18		
HTC 270 EG	Page 18		
HTC Greyline 450	Page 19		
HTC 80iD Dust Extractor	Page 19		

TEL: 01245 403353

[www.seabrookdevelopments.com](http://www.seabrookdevelopments.com)



## Contents

<b><u>Aerial Platforms</u></b>	Page 6	Wacker Neuson 3001	Page 13
Genie GS-1932	Page 6	Ecovolve ED1000	Page 13
Genie GR-15	Page 6	JCB 1T-1	Page 14
Genie GR-20	Page 6	Bomag BW120 AD-5 Roller	Page 14
Genie GS2668 RT	Page 6	<b><u>Brokk Demolition Robots</u></b>	Page 15
Genie GS-4046E	Page 7	Brokk 160	Page 15
Genie Z-45	Page 7	SB202 Breaker	Page 15
JCB S3246E	Page 7	CC420 Concrete Crusher	Page 15
JLG Toucan 800A	Page 7	Rockwheel TD-30	Page 15
JLG Toucan 1010	Page 8	Brokk 110	Page 16
Nifty HR12	Page 8	SB152 Breaker	Page 16
Skyjack SJ111-3226	Page 8	CC340 Concrete Crusher	Page 16
Upright X26N	Page 8	Brokk 70	Page 17
<b><u>Forklifts</u></b>	Page 9	BHB 105 Breaker	Page 17
Doosan B25X-7	Page 9	Buckets (all Brokk Models)	Page 17
Linde E25	Page 9	<b><u>HTC Grinders</u></b>	Page 18
Linde H25	Page 9	HTC 650 RX	Page 18
<b><u>Telehandlers</u></b>	Page 10	HTC 420 VS	Page 18
JCB 525-60	Page 10	HTC 270 EG	Page 18
JCB 535-125	Page 10	HTC Greyline 450	Page 19
JCB TLT 35D	Page 10	HTC 80iD Dust Extractor	Page 19
<b><u>Excavators</u></b>	Page 11	<b><u>Other Floor Preparation</u></b>	Page 19
Hyundai 125 LCR-9A	Page 11	PPC 250 Electric Grinder	Page 19
JCB 85Z-1	Page 11	SPE DFG250 Electric Grinder	Page 20
JCB 67C-1	Page 11	Preptec S3-B Vacuum	Page 20
Hyundai R272-9	Page 11	PPC M450 Dust Extractor	Page 20
JCB 19C-1	Page 12	SPE 12ES Shot Blaster	Page 20
JCB 18Z-1	Page 12	Preptec S210 40R Shot Blaster	Page 20
Takeuchi TB216 Hybrid	Page 12	Magnet Sweeper	Page 21
Wacker Neuson 803	Page 12	SPE BEF320 Scarifier	Page 21
<b><u>Dumpers</u></b>	Page 13	110v Scarifier	Page 21
Thwaites MACH2066	Page 13		
Wacker Neuson 4001	Page 13		

\*Datasheets available upon request

TEL: 01245 403353

[www.seabrookdevelopments.com](http://www.seabrookdevelopments.com)





## Genie GS-1932 Self-Propelled Electric

Max. Working Height	7.6 m
Lift Capacity	227 kg
Machine Width	0.81 m
Machine Length	1.83 m



## Genie GR20 Runabout Electric

Max. Working Height	8.02 m
Lift Capacity	159 kg
Machine Width	0.75 m
Machine Length	1.35 m



## Genie GS2668 RT Self-Propelled Diesel

Max. Working Height	9.92 m
Lift Capacity	567 kg
Machine Width	1.73 m
Machine Length	2.67 m



## Genie GS-4046E Drive Electric

Max. Working Height	13.94 m
Lift Capacity	350 kg
Machine Width	1.17 m
Machine Length	2.48 m



TEL: 01245 403353



## **Genie Z-45 Self-Propelled Articulating Boom Dual Fuel**

Max. Working Height	15.92 m
Max. Horizontal Reach	6.94 m
Max Up and Over Clearance (Riser extended)	7.5 m
Lift Capacity	300 kg



## **JCB S3246E Electric**

Max. Working Height	12 m
Lift Capacity	320 kg
Machine Width	1.15 m
Machine Length	2.39 m



## **JLG Toucan 800 A Electric**

Platform Height Elevated	6.1 m
Platform Capacity	200 kg
Machine Width	0.99 m

TEL: 01245 403353

## JLG Toucan 1010 Electric

Platform Height Elevated	8.1 m
Platform Capacity	200 kg
Machine Width	0.99 m



## Nifty HR12 Bi-Energy

Max. Working Height	12.2 m
Max. Horizontal Reach	6.1 m
Platform Capacity	200 kg



## Skyjack SJ111-3226 Electric

Max. Working Height	9.92 m
Lift Capacity	227 kg
Machine Width	0.84 m
Machine Length	2.32 m



## Upright X26N Electric

Max. Working Height	9.93 m
Lift Capacity	454 kg
Machine Width	1.22 m
Machine Length	2.35 m



TEL: 01245 403353



**Doosan B25X-7 AC Electric  
360° CAM Rotator Optional**

Load Capacity <u>without Rotator</u>	2.5T
Load Capacity <u>with Rotator</u>	2T
Machine Width	1.24m
Machine Height	2.18m



**Linde E25 Battery fitted with 360°  
CAM Rotator**

Load Capacity	2T
Machine Width	1.75 m
Machine Height	2.15 m



**Linde H25 Diesel**

Load Capacity	2.5T
Machine Width	1.18 m
Machine Height	2.22 m

TEL: 01245 403353

## JCB 525-60

Max. Lift Capacity	2.5 T
Lift Height	6 m
Machine Width	1.84 m
Machine Height	1.89 m
Machine Length to fork face	4 m



## JCB 535-125

Max. Lift Capacity	3.5 T
Lift Height	12.07 m
Machine Width	2.35 m
Machine Height	2.59 m
Machine Length to fork face	5.8 m



## Hyundai 125 LCR-9A 13T Diesel

Max. Digging Depth	5.06 m
Max. Dumping Height	5.74 m
Machine Width	2.7 m
Machine Height	2.9 m
Overall Length	6.86 m



TEL: 01245 403353



## **JCB 85Z-1 8T Diesel**

Max. Digging Depth (Dozer Down)	3.715 m
Max. Dumping Height	5.023 m
Machine Width	2.3 m
Machine Height	2.71 m
Overall Length	5.84m



## **JCB 67C-1 6T Diesel**

Max. Digging Depth (Dozer Down)	4.07 m
Max. Dumping Height	4.281 m
Machine Width	2 m
Machine Height	2.58 m
Overall Length	5.6 m



## **Hyundai R27Z-9 3T Diesel**

Max. Digging Depth	2.5 m
Max. Dumping Height	2.89 m
Machine Width	1.55 m
Machine Height	2.5 m
Overall Length	4.18 m

TEL: 01245 403353



# Excavators, Dumpers & Rollers

## **JCB 19C-1 1.9T Electric**

Max. Digging Depth (Dozer Down)	2.426 m
Max. Dumping Height	2.598 m
Machine Width	0.99 m
Machine Height	2.34 m
Overall Length	3.86 m



## **Takeuchi TB216 1.6T Hybrid**

Max. Digging Depth	2.39 m
Max. Dumping Height	2.7 m
Machine Width	1.3 m
Machine Height	2.36 m
Overall Length	4.04 m



## **Wacker Neuson 803 1T Dual Power**

Max. Digging Depth	1.76 m
Max. Dumping Height	2.01 m
Machine Width	0.71 m
Machine Height	2.26 m
Overall Length	2.83 m



TEL: 01245 403353



## **Thwaites MACH2066 6T Diesel**

### **Power Swivel**

Unladen Weight	4420 kg
Machine Width	2.28 m
Machine Height	3.3 m
Overall Length	5.08 m



## **Wacker Neuson 3001 3T Diesel**

### **Four-wheel Swivel Tip**

Unladen Weight	2550 kg
Machine Width	1.785 m
Machine Height	2.67 m
Overall Length	4.14 m



## **Ecovolve ED1000 1T Electric**

Unladen Weight	1300 kg
Machine Width	0.965 m
Machine Height	1.31 m
Overall Length	2.565 m

TEL: 01245 403353

## **JCB 1T Diesel Front Tip—High Tip**

Unladen Weight	1350 kg
Machine Width	1.12 m
Machine Height	2.832 m
Overall Length	2.98 m



## **BOMAG BW 120 AD-5 Tandem Roller**

Operating Weight	2.700kg
Drum Width	1200 mm
Machine Height	2.568 m
Overall Length	2.59 m



TEL: 01245 403353



### **Brokk 160**

Remote Controlled Demolition  
Machine  
(with SB202 attachment)

### **Brokk 160 Attachments**



#### **SB202 Breaker**

Hitting Power 406 J/Nm  
850 - 1800 Blows/min  
Weight 200 kg



#### **CC420 Concrete Crusher**

Jaw Opening 420 mm  
Max. Crushing Force 382kN  
Weight 240 kg



#### **Rockwheel TD-30**

##### **Hydraulic Cutting Unit**

Max. Input Power 22kw  
Max. Pressure 400 bar  
Pick Force 9.9kN @ 300 bar  
Weight 215 kg

**\*Buckets - see page 17**

TEL: 01245 403353

### **Brokk 110**

Remote Controlled Demolition  
Machine

(with SB152 attachment)



### **Brokk 110 Attachments**

#### **SB152 Breaker**

Hitting Power 254 J/Nm

840 - 1900 Blows/min

Weight 140 kg



#### **CC340 Concrete Crusher**

Jaw Opening 343 mm

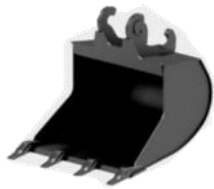
Max. Crushing Force 360kN

Weight 150 kg



**\*Buckets - see page 17**

TEL: 01245 403353



#### Brokk Buckets

Made for	Volume	Width	Weight
<b>Brokk 160</b>	80L / 2.8 cu ft	690 mm	76 kg
<b>Brokk 110</b>	60L / 2.1 cu ft	520 mm	61 kg
<b>Brokk 70</b>	40L / 1.4 cu ft	430 mm	29 kg

Brokk buckets

TEL: 01245 403353

## HTC 650 RX Radio Controlled Grinder

Weight	455 kg
Grinding Pressure	183-202-272 kg
Grinding Diameter	650 mm
Grinding Discs	4 x 230 mm
Voltage	3 x 400 v
Motor Output	11 kW
Revolution Speed	300 - 1400 rpm



## HTC 420 VS Grinder

Weight	94 kg
Grinding Pressure	65 kg
Grinding Diameter	420 mm
Grinding Discs	3 x 180 mm
Voltage	1 x 100 v
Motor Output	2,2 kW
Revolution Speed	430 - 1140 rpm



## HTC 270 EG Grinder

Weight	103 kg
Grinding Pressure	36 kg
Grinding Diameter	270 mm
Grinding Discs	1 x 270 mm
Voltage	3 x 400 v
Motor Output	2,2 kW
Revolution Speed	460 - 1220 rpm



TEL: 01245 403353





## HTC GREYLINE 450

Weight	95 kg
Grinding Pressure	59 kg
Grinding Diameter	450 mm
Grinding Discs	3 x 180 mm
Voltage	1 x 110 v
Motor Output	1,5 kW
Revolution Speed	470 rpm



## HTC 80iD Dust Extractor

Weight	272 kg
Motor Output	7,5 kW
Voltage	3 x 400 v
Max. Theoretical Airflow	700 m <sup>3</sup> /h



## PPC 250 Electric Grinder

Weight	145 kg
Grinding Diameter	250 mm
Voltage	415 v
Motor Output	5,5 kW



## SPE DFG250 Electric Grinder

Weight	160 kg
Grinding Diameter	250 mm
Voltage	415 v
Motor Output	5,5 kW
SPE DFG250 Datasheet - Page 98	

TEL: 01245 403353

# Floor Preparation



## **Preptec S3-B Dust Control Vacuum**

110v Motor  
50L Capacity



## **PPC M450 Dust Extractor**

110v Motor  
50L Capacity



## **SPE 12ES Shot Blaster Electric 3 Phase**

Blast Motor Output 10hp  
Cleaning Width 305 mm  
Weight 320 kg



## **Preptec S210 40R Shot Blaster 3 Phase**

Power 4.0 kw  
Blast Width 210 mm  
Weight 114 kg



TEL: 01245 403353



## Magnet Sweeper

Used for collection of stray steel abrasive following shot blasting.

Size (L x W x H) 890 / 750 / 860 mm



## SPE BEF320 3 Phase Concrete Scarifier

Working Width	320 mm
Cutter Head Speed	933 rpm
Working Width	320 mm
Weight	339 kg



## 110v Scarifier

Single Phase

TEL: 01245 403353

\_\_\_\_\_



## DATASHEETS

2023

Forklifts, Excavators,  
Floor Preparation & More

Woodlands, South Hanningfield Road,  
South Hanningfield, Essex CM3 8HQ

**Tel: (01245) 403353**

**E: [admin@seabrookdevelopments.co.uk](mailto:admin@seabrookdevelopments.co.uk)**



## Doosan B25X-7

### GENERAL SPECIFICATIONS

CHARACTERISTICS	1	Manufacturer		Doosan		
	2	Model		B25X-7		
	3	Capacity	at rated load center	2,500		
	4	Load center	distance	500		
	5	Power type		AC electric		
	6	Operator type		driver seated		
	7	Tire type	C=cushion, P=pneumatic, E=Solid	P, E		
	8	Wheels (x=driven)	number, front/rear	x 2/2		
	9	Maximum fork height	with STD 2-stage mast	3,230		
	10	Free lift		147		
DIMENSIONS	11	Fork carriage	ISO class	II		
	12	Forks	thickness x width x length	40x100x1,050		
	13		fork spacing (min x max)	272 x 1,035		
	14	Tilt of mast	forward / backward	6/9		
	15	Overall dimensions	length to forkface	2,329		
	16		overall width	1,245		
	17		mast lowered height	2,160		
	18		mast extended height	3,990		
	19		overhead guard height (Cabin)	2,185		
	20		seat height	1,070		
	21	Outer turning radius		1,950		
		Inner turning radius		348		
	22	Load moment constant	center of drive axle to fork face	448		
	23	Right Angle Stacking Aisle Width (with pallets & clearance)		pallet 1,000x1,200 crossways	3,620	
				pallet 800x1,200 lengthways	3,799	
	PERFORMANCE	24	travel	loaded/unloaded	16/18	
		25	Speed	lift	loaded/unloaded	480/600
		26		lowering	loaded/unloaded	490/460
		28	Max. drawbar pull	at 1.6 km/h, loaded/unloaded	kg.f	1,768/1,675
		30	Gradeability	at 1.6 km/h, loaded/unloaded	%	25/38
WEIGHT		32	Total weight	with min. weight of battery	kg	4,623
	33	Axle load	loaded, front/rear	kg	6,275/848	
	34		unloaded, front/rear	kg	2,284/2,339	
CHASSIS	35	number of front/rear		2/2		
	36	Tires	size	front	23x10-12	
			rear	18x7-8		
	38	Wheel base	distance	mm	1,589	
	39	Tread width	front	mm	998	
			rear	mm	998	
	40	Ground clearance	loaded	at the lowest point	mm	130
			at center of wheelbase	mm	140	
	42	Brakes	service brake		hydraulic	
			parking brake		auto-electric	
POWERTRAIN	43	type		DIN 43536 A		
	45	Battery	voltage	V	80	
			capacity (5 hours rating) - normal	AH	500	
			capacity (5 hours rating) - max.	AH	620	
			min. weight	kg	1,560	
			46	Battery compartment	at chassis sizes (W x L x H)	mm
	47	Electric motors	drive motor rating at S2 60 minutes	kW	10.0 x 2	
	lifting motor rating at S3 15%		kW	21		
	54	Control type	drive and hydraulic	type	MOSFET inverter	
	55	Drive axle	brake type	type	ODB	
57	Relief pressure	system	bar	193		
		attachment	bar	155		

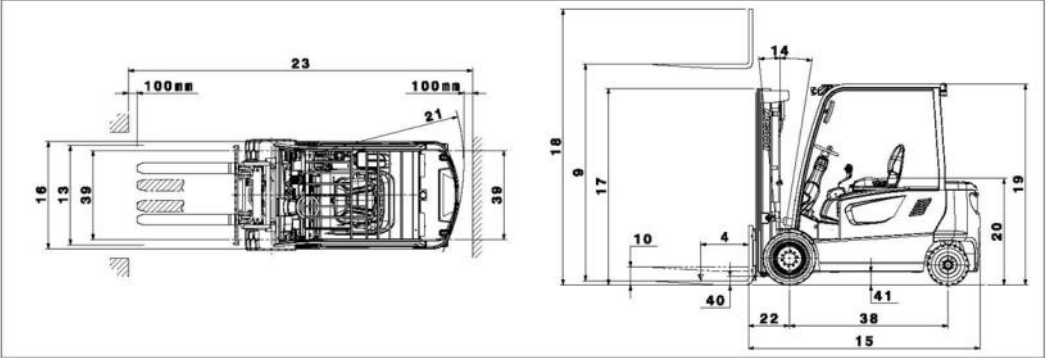
Capacity 2000 kg with CAM  
Rotator fitted

Capacity 2000 kg with CAM  
Rotator fitted

Note : Specification values quoted in this specification sheet have been rounded. Performance may vary due to operation conditions.  
Products and specifications are subject to improvement and change without prior notices.



# Doosan B25X-7 DIMENSIONAL DRAWING



## MAST SPECIFICATIONS and RATED CAPACITIES B22X-7, B25X-7, B25XL-7


Mast type	Maximum Fork Height	Maximum Lowered Height	Fully Extended Height	Free Lift	Rated Load Capacities			
			with Load Backrest	With Load Backrest	B22X-5, B25X-7, B25XL-7			
					Tilt Angle			
					Single Pneu.		Single Solid	
					FWD	BWD	FWD	BWD
	mm	mm	mm	mm	deg	deg	deg	deg
					6	9	6	9
					6	9	6	9
					6	9	6	9
					6	9	6	9
					6	9	6	9
					6	9	6	9
					6	9	6	9
					6	9	6	9
					6	9	6	9
					6	9	6	9
					6	9	6	9
					6	9	6	9
FFT	3,900	1,885	5,155	680	6	9	6	9
	4,290	2,020	5,560	815	6	9	6	9
	4,730	2,160	5,980	955	6	9	6	9
	4,805	2,165	6,055	980	6	9	6	9
	5,560	2,510	6,805	1,305	6	5	6	9
	6,010	2,660	7,255	1,455	6	5	6	9





## Linde E25 Forklift with 360° CAM Rotator

Model designation	E 25	
Power unit: Battery, diesel, gasoline, LP gas, AC	Battery	
Load capacity	Kg	2T
Load center	c (mm)	500
Service weight	kg	4505
Mast/fork carriage tilt, forward/back	$\alpha/\beta$ (°)	5/7.5
Mast height, lowered	h1 (mm)	2229 <sup>1)</sup>
Lift	h3 (mm)	3050
Overhead guard/cab height	h6 (mm)	2070
Overall length	l1 (mm)	3370
Head length	l2 (mm)	2370
Overall width	b1/b2 (mm)	1170
Aisle width, 1000 x 1200 pallet crosswise	Ast (mm)	3691
Aisle width, 800 x 1000 pallet lengthwise	Ast (mm)	3819
Travel speed, with/without load	km/h	15/16
Lift speed, with/without load	m/s	0.33/0.48
Drive motor (60 minutes rating)	kW	2 x 6.4
Lift motor, 15 % rating	kW	13.5
Battery voltage/rated capacity (5 h)	V/Ah	80/550



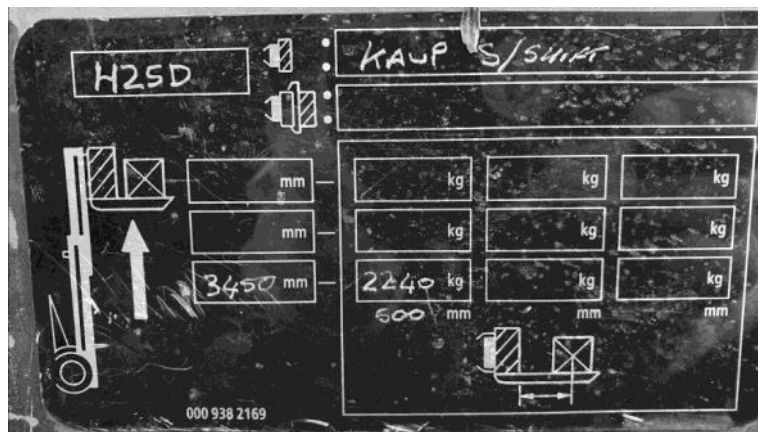
Attachment			
CAM ROTATOR PRC22DT			
Nominal Capacity	2200 kg	D 500 mm	H -
		H D	500 600
	4300 mm	2070	1890
	mm		
	mm		
Capacity-Q with noted attachment with vertical upright			

As D, H, and C increase, the lifting capacity decreases



## Linde H25D Forklift

Model Designation	H25D
Power	Diesel
Load Capacity	2500 kg
Load Centre	500 mm
Machine Height	2.22 m
Machine Width	1.18 m
Machine Weight	4.35 T





# Self-Propelled Scissor Lifts

GS-1932

## Specifications

Models	GS-1932	
Measurements	Metric	US
Working height maximum*	7.60 m	24 ft 11 in
▲ Platform height maximum w/load sense	5.60 m	18 ft 5 in
▲ Platform height - stowed	1.00 m	3 ft 3.5 in
▲ Platform length - outside	1.63 m	5 ft 4 in
extended	2.54 m	8 ft 4 in
Slide-out platform extension deck	0.91 m	3 ft
▲ Platform width - outside	0.74 m	2 ft 5 in
Guardrail height	1.10 m	3 ft 7 in
Toeboard height	0.15 m	6 in
▲ Height - stowed: folding guardrails	2.11 m	6 ft 11 in
rails folded	1.75 m	5 ft 9 in
▲ Length - stowed	1.83 m	6 ft
Length - stowed extended	2.74 m	8 ft 11 in
▲ Width	0.813 m	2 ft 8 in
▲ Wheelbase	1.32 m	4 ft 4 in
▲ Ground clearance - center	6 cm	2.4 in
▲ - with pothole guards deployed	2 cm	0.75 in

## Productivity

Max platform occupancy (in/out) <sup>1</sup>	2/1	
Lift capacity	227 kg	500 lbs
Drive speed - stowed	4.0 km/h	2.5 mph
Drive speed - raised	0.8 km/h	0.5 mph
Gradeability - stowed**	25%	25%
Turning radius - inside	zero	zero
Turning radius - outside	1.55 m	5 ft 1 in
Raise / lower speed	16 / 29 sec	16 / 29 sec
Controls	proportional	
Drive	dual front wheel	
Multiple disc brakes	dual rear wheel	
Tyres - solid non-marking	30x11x20 cm 12x4.5x8 in	

## Power

Power source	24 v (four 6v 225 Ah batteries)	
Hydraulic system capacity	14.2 L	3.75 gal

## Sound & Vibration Levels

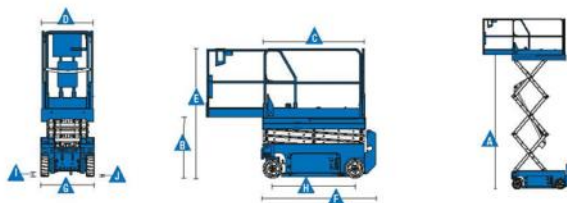
Sound pressure level (ground workstations)	<70 dBA	<70 dBA
Sound pressure level (platform workstations)	<70 dBA	<70 dBA
Vibration	<2.5 m/s <sup>2</sup>	<8 ft 2 in/s <sup>2</sup>

## Weight\*\*\*

1,503 kg	3,313 lbs
----------	-----------

## Standards Compliance

EU Directives: 2006/42/EC - Machinery (harmonized standard EN280:2001+A2:2009); 2004/108/EC (EMC); 2006/95/EC (LVD)



- <sup>1</sup> Indoor use only for the 30' Series
- <sup>\*</sup> The metric equivalent of working height adds 2 m to platform height.
- <sup>\*\*</sup> Gradeability applies to driving on slopes, see Operator's Manual for details regarding slope ratings.
- <sup>\*\*\*</sup> Weight will vary depending on options and/or country standards.





# Aerial Work Platforms

## Genie® Runabout™

### Specifications

Models
Measurements
Working height*
Platform height
▲▲ Platform dimensions (length x width)
Standard
Standard with extension
▲ Height - stowed
▲ Length - stowed
▲ Width
▲ Ground clearance - center

GR-15		GR-20	
Metric	US	Metric	US
6.52 m	20 ft 10 in	8.02 m	25 ft 9 in
4.52 m	14 ft 10 in	6.02 m	19 ft 9 in
89 x 75 cm	35 x 29.5 in	89 x 75 cm	35 x 29.5 in
1.40 m x 75 cm	55 x 29.5 in	1.40 m x 75 cm	55 x 29.5 in
1.57 m	5 ft 2 in	1.98 m	6 ft 6 in
1.35 m	4 ft 5 in	1.35 m	4 ft 5 in
75 cm	2 ft 5.5 in	80 cm	2 ft 7.5 in
6 cm	2.5 in	6 cm	2.5 in

### Productivity

Max platform occupancy (indoor/outdoor) <sup>†</sup>
Lift capacity
Drive speed - stowed
Drive speed - raised
Gradeability**
Turning radius - inside
Turning radius - outside
Raise / lower speed
Controls
Tyres - solid non-marking

1/-	1/-	1/-	1/-
227 kg	500 lbs	159 kg	350 lbs
4.0 km/h	2.5 mph	4.0 km/h	2.5 mph
0.8 km/h	0.5 mph	0.8 km/h	0.5 mph
30%	30%	30%	30%
zero	zero	zero	zero
1.42 m	4 ft 7 in	1.42 m	4 ft 7 in
21 / 19 sec	21 / 19 sec	24 / 21 sec	24 / 21 sec
24V DC proportional		24V DC proportional	
25 x 8 x 20 cm	10 x 3 x 8 in	25 x 8 x 20 cm	10 x 3 x 8 in

### Power

Power source
Hydraulic system capacity

24V (four 6V 225 Ah batteries)		24V (four 6V 225 Ah batteries)	
8.33 L	2.2 gal	8.33 L	2.2 gal

### Sound & Vibration Levels

Sound pressure level (ground workstation)
Sound pressure level (platform workstation)
Vibration

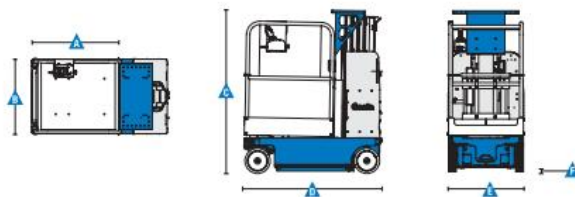
<70 dBA	<70 dBA	<70 dBA	<70 dBA
<70 dBA	<70 dBA	<70 dBA	<70 dBA
<2.5 m/s <sup>2</sup>	<8 ft 2 in/s <sup>2</sup>	<2.5 m/s <sup>2</sup>	<8 ft 2 in/s <sup>2</sup>

### Weight\*\*\*

994 kg	2,192 lbs	1,112 kg	2,451 lbs
--------	-----------	----------	-----------

### Standards Compliance

EU Directives: 2006/42/EC - Machinery (harmonized standard EN280:2013);  
2004/108/EC (EMC); 2006/95/EC (LVD)



<sup>†</sup> Indoor use only.  
<sup>\*</sup> The metric equivalent of working height adds 2 m to platform height. U.S. adds 6 ft to platform height.  
<sup>\*\*</sup> Gradeability applies to driving on slopes. See operator's manual for details regarding slope rating.  
<sup>\*\*\*</sup> Weight will vary depending on options and/or country standards.



## SELF-PROPELLED SCISSOR LIFTS

# GS™-2668 RT & GS™-3268 RT



## Specifications

MODELS GS™-2668 RT		
MEASUREMENTS	Metric	US
Working height maximum*	9.92 m	32 ft
<b>A</b> Platform height - maximum	7.92 m	26 ft
<b>B</b> Platform height - stowed	1.19 m	3 ft 10.75 in
<b>C</b> Platform length - outside	2.51 m	8 ft 3 in
- extended	3.75 m	12 ft 3 in
Slide-out platform extension deck	1.22 m	4 ft
<b>D</b> Platform width - outside	1.55 m	5 ft 1 in
Toeboard height	15 cm	6 in
<b>E</b> Height - stowed**	2.32 m	7 ft 7.5 in
rails lowered	1.70 m	5 ft 7 in
<b>F</b> Length - stowed	2.67 m	8 ft 9 in
platform extended	4.10 m	13 ft 5.5 in
with outriggers	3.38 m	11 ft 3 in
<b>G</b> Width	1.73 m	5 ft 8 in
<b>H</b> Wheelbase	1.85 m	6 ft 1 in
<b>I</b> Ground clearance - centre	19 cm	7.5 in

PRODUCTIVITY		
Maximum platform occupancy (indoor/outdoor)	4/4	4/4
Lift capacity	567 kg	1,250 lbs
Drive speed - stowed	6.1 km/h	3.8 mph
Drive speed - raised	0.8 km/h	0.5 mph
Gradeability-stowed***	35%	35%
Maximum outrigger levelling:		
front to back	6.6°	6.6°
side to side	10.6°	10.6°
Turning radius - inside	1.52 m	5 ft
Turning radius - outside	3.68 m	12 ft 1 in
Raise/lower speed	30/35 sec	30/35 sec
Controls	proportional	proportional
Drive	four wheel	four wheel
Tyres - rough terrain	30 x 60 cm	12 x 23.5 in

POWER		
Power source	Kubota diesel 20 hp (15 kW) Kubota petrol/LPG 23 hp (17 kW) Perkins 403C-11 Diesel 26 hp	
Fuel tank capacity	56.8 L	15 gal
Hydraulic system capacity	62.5 L	16.5 gal

WEIGHT****		
	3,072 kg	6,772 lbs
Weight modifiers for options:		
Outriggers	add 483 kg	1,064 lbs
Generator	add 48 kg	105 lbs

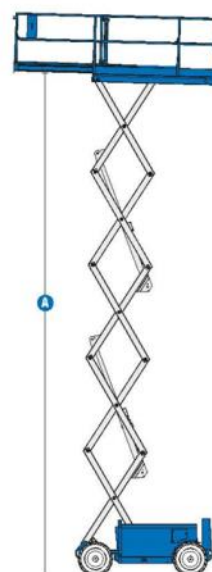
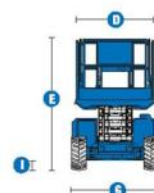
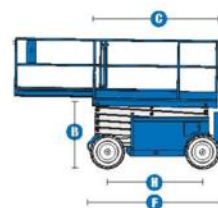
STANDARDS COMPLIANCE	CE EN280, PB-10-611-03
----------------------	------------------------

\* The metric equivalent of working height adds 2 m to platform height. U.S. adds 6 ft to platform height.

\*\* Based on RT tyres; deduct 5.8 cm (2 in) for turf and non-marking tyres.

\*\*\* Gradeability applies to driving on slopes. Gradeability may vary depending on the weight of options installed on machine. See Operator's Manual for details regarding slope ratings.

\*\*\*\* Weight varies depending on options and country standards.



Electric Slab Scissor Lifts

# Genie® GS™-4046

## Specifications

Models	GS-4046 E-Drive	
Measurements	US	Metric
Working height max. - indoor <sup>(1)</sup>	45 ft 2 in	13.94 m
Working height max. - outdoor <sup>(1)</sup>	29 ft	9.00 m
A Platform height max. - indoor	39 ft 2 in	11.94 m
A Platform height max. - outdoor	23 ft	7.01 m
B Platform height - stowed	4 ft 9 in	1.45 m
C Platform length - outside	7 ft 5 in	2.26 m
D Platform length - outside, extended	10 ft 5 in	3.18 m
E Slide-out platform extension deck - length	3 ft	0.91 m
F Platform width - outside	3 ft 10 in	1.16 m
Guardrail height	3 ft 7 in	1.10 m
Toeboard height	6 in	15 cm
G Height - stowed (folding rails)	8 ft 5 in	2.57 m
H Height - stowed (rails lowered)	6 ft 6 in	1.98 m
I Length machine - stowed	8 ft 2 in	2.48 m
J Length machine - stowed, extended	11 ft 6 in	3.51 m
K Width	3 ft 10 in	1.17 m
L Wheelbase	6 ft 1 in	1.85 m
M Ground clearance (center) - pothole guards retracted	5 in	12 cm
N Ground clearance - pothole guards deployed	0.9 in	2.30 cm

## Productivity

Maximum platform occupancy (in/out)	3/1	3/1
Lift capacity	770 lb	350 kg
Lift capacity - extension deck extended	250 lb	113 kg
Max. platform drive height	39 ft 2 in	11.94 m
Drive speed - stowed	2.0 mph	3.2 km/h
Drive speed - raised	0.5 mph	0.8 km/h
Gradeability - stowed <sup>(2)</sup>	25%	25%
Turning radius - inside/outside	0/7 ft 6 in	0/2.29 m
Lifting speed - raise/lower	71/41 sec	71/41 sec
Tilt sensor activation (front to back/side to side)	3°/1.5°	3°/1.5°
Tires - solid non-marking	15x5 in	38x13 cm

## Power

Power	24 V DC (4x 12 V 300 Ah)	24 V DC (4x 12 V 300 Ah)
Hydraulic tank capacity (E-Drive)	4.9 gal	18.5 L

## Weight<sup>(3)</sup> and Floor Loading<sup>(4)</sup>

Weight	6,871 lb	3,117 kg
Tire load max.	2,735 lb	1,241 kg
Tire contact pressure	170.3 psi	1,174 kPa
Occupied floor pressure	275 psf	13.17 kPa

## Sound and Vibration Levels

Sound Pressure level (ground workstation)	< 70 dBA	< 70 dBA
Sound Pressure level (platform workstation)	< 70 dBA	< 70 dBA
Vibrations	< 2.5 m/s <sup>2</sup>	< 2.5 m/s <sup>2</sup>

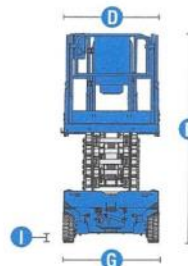
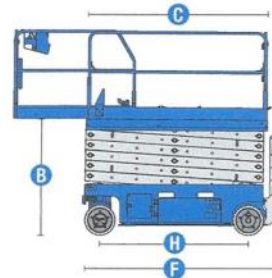
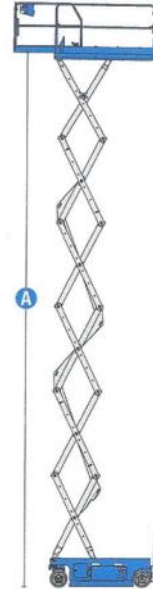
(1) The metric equivalent of working height adds 2 m to platform height. US adds 6 ft to platform height.

(2) Gradeability applies to driving on slopes and may vary depending on options and machine configurations. See operator's manual for details regarding slope ratings.

(3) Weight refers to standard configuration and may vary depending on options and/or country standards.

(4) Floor loading information is approximate and may vary depending on options and machine configurations. It should be used only with adequate safety factors.

CE 2006/42/EC, 2004/108/EC, 2000/14/EC







# Self-Propelled Articulating Booms

Z<sup>®</sup>-45 DC & Z-45 FE

## Specifications

Model	Z-45 DC & Z-45 FE	
Measurements	Metric	US
Working height maximum*	15.92 m	51 ft 8 in
Platform height maximum	13.92 m	45 ft 8 in
Horizontal reach maximum	6.94 m	22 ft 9 in
Up and over clearance maximum	7.50 m	24 ft 7 in
▲ Platform length	0.76 m	2 ft 6 in
▲ Platform width	1.83 m	6 ft
▲ Height - stowed	2.29 m	7 ft 6 in
▲ Length - stowed	5.87 m	19 ft 3 in
▲ Width	2.29 m	7 ft 6 in
▲ Wheelbase	2.03 m	6 ft 8 in
▲ Ground clearance - center	0.41 m	1 ft 4 in

## Productivity

Lift capacity	300 kg	660 lbs
Platform rotation	160°	160°
Vertical jib rotation	135°	135°
Turntable rotation	355° non-continuous	
Turntable tailswing	0.37 m	1 ft 3 in
Drive speed - stowed	7.2 km/h	4.5 mph
Drive speed - raised**	0.5 km/h	0.31 mph
Gradeability - 4WD - stowed***	45%	45%
Turning radius - inside	2.40 m	7 ft 10 in
Turning radius - outside	4.30 m	14 ft 1 in
Controls	24V DC proportional	
Tyres	315/55 D20	

## Power

Drive system	34 V 3-Phase AC	
Power source	48 V DC (eight 6V batteries)	
	370 Ah capacity (AGM, standard on FE)	
	390 Ah capacity (FLA, standard on DC)	
	24.8 hp (18.5kW) Kubota D1105 Stage V driven AC generator (FE only)	
Auxiliary power unit	12V DC	12V DC
Hydraulic tank capacity	40 L	10.5 gal
Fuel tank capacity	64.35 L	17 gal

## Sound & Vibration Levels

Sound pressure level (ground workstation)	70 dBA (DC) / 80 dBA (FE)	
Sound pressure level (platform workstation)	70 dBA (DC) / 76 dBA (FE)	
Vibration	0.16 m/s <sup>2</sup> (0.52 ft/s <sup>2</sup> )	

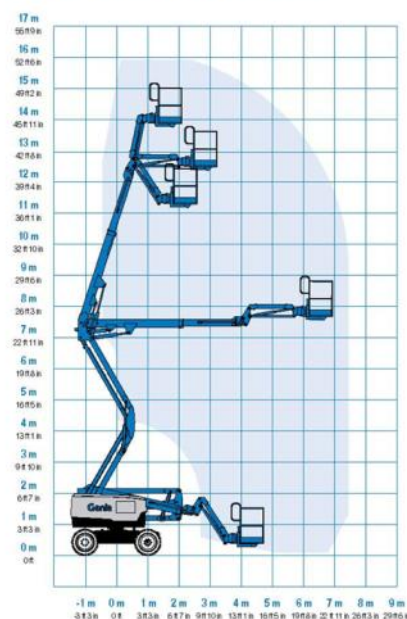
## Weight\*\*\*\*

Z-45 DC	6,379 kg	14,064 lb
Z-45 FE	6,559 kg	14,460 lb

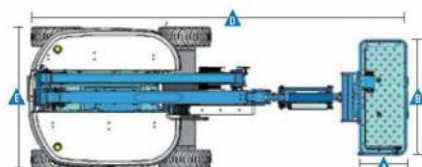
## Standards Compliance

EU Directives: 2006/42/EC - Machinery (harmonized standard EN280), European Emissions Regulation (EU) 2016/1628 Stage V; 2004/108/EC (EMC); 2000/14/EC (Outdoor Noise)

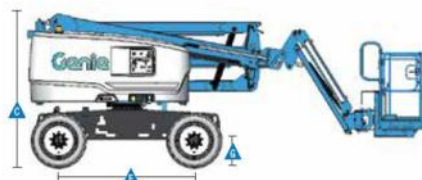
Range Of Motion Z-45 DC & Z-45 FE



\* The metric equivalent of working height adds 2 m to platform height. U.S. adds 6 ft to platform height.  
 \*\* In lift mode (platform raised), the machine is designed to operate on firm, level surfaces only.  
 \*\*\* Gradeability applies to driving on slopes and may vary depending on options and machine configurations. See operator's manual for details.  
 \*\*\*\* Weight will vary depending on options and/or country standards.



[www.genielift.com/en-gb](http://www.genielift.com/en-gb)





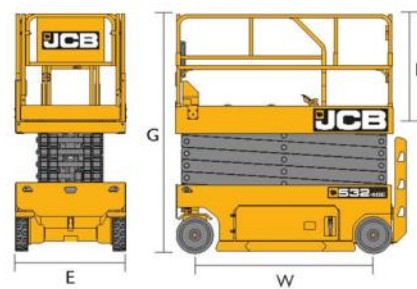
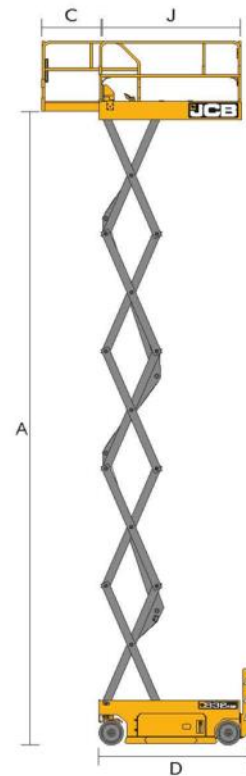
# ELECTRIC SCISSOR S3246E



## MACHINE SPECIFICATIONS

A	Max. Platform Height	m / ft ins	10 / 32'9"
B	Max. Working Height	m / ft ins	12 / 38'9"
C	Extension Outreach	m / ins	0.9 / 35
D	Length (Stowed)	m / ft ins	2.39 / 7'10"
E	Width (Stowed)	m / ft ins	1.15 / 3'9"
F	Height (Stowed, Guards Folded)	m / ft ins	1.86 / 6'1"
G	Height (Stowed, Guards Unfolded)	m / ft ins	2.48 / 8'2"
H	Weight	kg / lbs	2,646 / 5,834
I	Max. Wheel Loading	kg / lbs	1,180 / 2,602
J	Platform Length	m / ins	2.25 / 89
K	Platform Width	m / ins	1.15 / 46
L	Platform Height	m / ins	1.10 / 43
M	Load Capacity	kg / lbs	320 / 705
N	Extension Deck Load Capacity	kg / lbs	120 / 265
O	Max. Platform Occupants (Outdoor)		1
P	Max. Platform Occupants (Indoor)		2
Q	Max. Allowable Side Force (Indoor)	N / lbf	400 / 90
R	Max. Allowable Side Force (Outdoor)	N / lbf	200 / 45
S	Max. Allowable Wind Speed (Outdoor)	m/s / mph	12.5 / 28
T	Max. Allowable Slope (Front / Back)	*	3
U	Max. Allowable Slope (Side / Side)	*	1.5
V	Ground Clearance (Stowed)	m / ins	0.1 / 4"
W	Wheelbase	m / ins	1.85 / 73"
X	Turning Radius (Outside)	m / ft ins	2.35 / 7'8"
Y	Turning Radius (Inside)	m / ins	0
Z	Gradeability	%	25
AA	Max. Driving Speed (Stowed)	km/h / mph	3.2 / 2
AB	Max. Driving Speed (Raised)	km/h / mph	0.8 / 0.5
AC	Rising Speed (Loaded)	s	53~58
AD	Falling Speed (Loaded)	s	40~45
AE	Solid Tyre Dimensions	mm	380 x 125
AF	Solid Tyre Dimensions	ins	15 x 5
AG	Hydraulic System Volume	L / gal	22 / 5.8
AH	Hydraulic System Pressure	Mpa	24
AI	Battery (Voltage)	V	6
AJ	Battery (QTY)		4
AK	Battery (Ah)	Ah	240
AL	Power Unit (DC)	V / Kw	24 / 3.3
AM	Charger Input / Output Voltage	V	120~240 / 25
AN	Drive & Steer Mode		Front WD, 2WS
AO	Brake		Rear 2

## WORK ENVELOPE



## NOTES

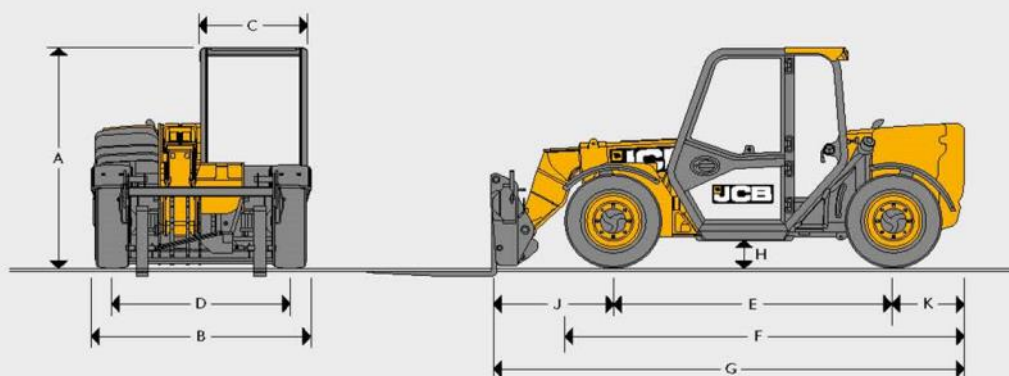
<sup>1</sup>Machine weight may vary with regional requirements and specific options.



# SPECIFICATION

## LOADALL 525-60 HI VIZ

### STATIC DIMENSIONS



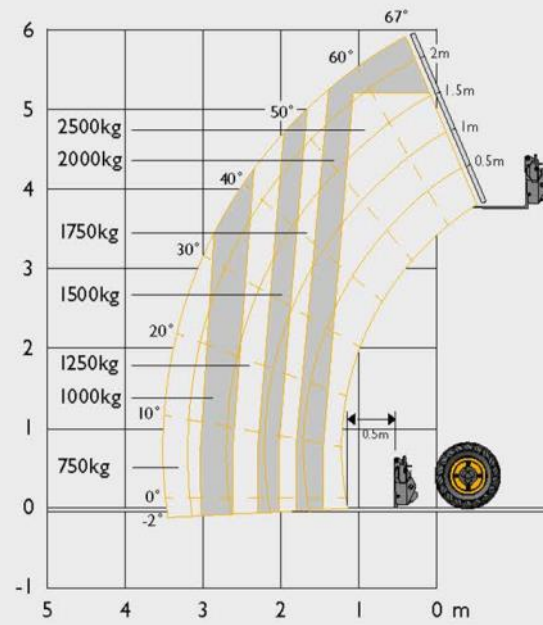
A	Overall height*	m	1.89
B	Overall width (over tyres)*	m	1.84
C	Inside width of cab	m	0.88
D	Front track	m	1.53
E	Wheelbase	m	2.39
F	Overall Length to front tyres	m	3.38
G	Overall length to front carriage	m	4
H	Ground clearance	m	0.23
J	Front wheel centre to carriage	m	1.02
K	Rear wheel centre to rear face	m	0.6
	Outside turn radius (over tyres)	m	3.7
	Carriage roll back angle	degrees	11
	Carriage dump angle	degrees	114
	Weight	kg	5230
	Tyres	industrial	12x16.5

\*Dependant upon tyre specified.



## JCB 525-60

### LIFT PERFORMANCE



Maximum lift capacity	kg	2500
Lift capacity to full height	kg	2000
Lift capacity at full reach	kg	750
Lift height	m	6
Reach at maximum lift height	m	-0.15
Maximum forward reach (to front of carriage)	m	3.5
Complies with stability test EN1459-1		



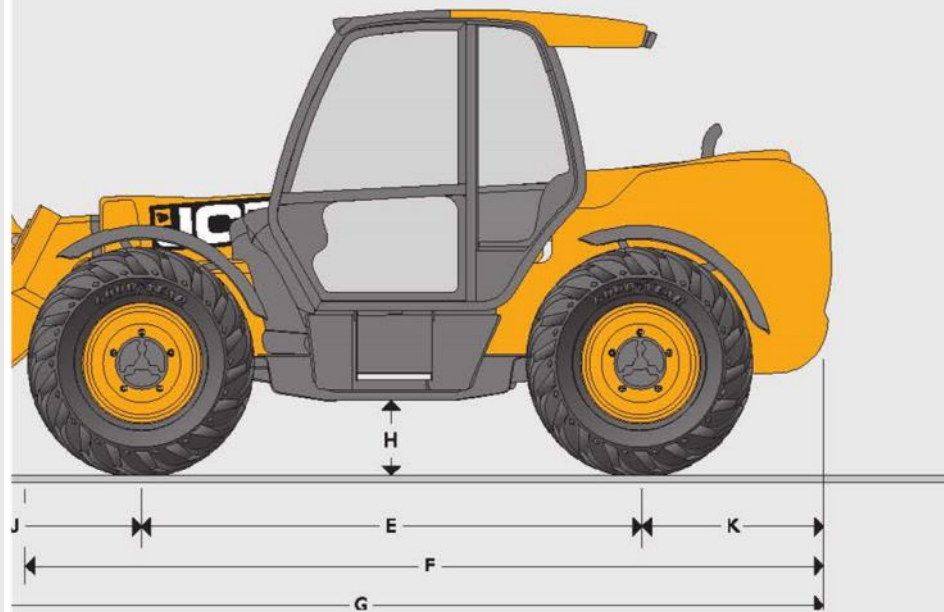
**CONSTRUCTION LOADALLS** 53|-70/535-95/533-105/535-125/535-140/540-141/540-

Technical drawing of a forklift showing dimensions A, B, C, and D. Dimension A is the overall height from the ground to the top of the mast. Dimension B is the overall width of the machine. Dimension C is the width of the operator's compartment. Dimension D is the width of the chassis. The drawing is a side profile view of the forklift, showing the mast, operator's compartment, and chassis.

Machine model		535-125 HiVtz
A Overall height	m	2.59
B Overall width (over tyres)*	m	2.35
C Inside width of cab	m	0.94
D Front track	m	1.90
E Wheelbase	m	2.75
F Overall length to front tyres	m	4.74
G Overall length to front carriage	m	5.80
H Ground clearance	m	0.40
J Front wheel centre to carriage	m	1.68
K Rear wheel centre to rear face	m	1.37
Overall width with stabilisers fully deployed	m	2.57
Outside turn radius (over tyres)	m	3.75
Carriage rollback angle	degrees	37.0
Carriage dump angle	degrees	12.5
Weight	kg	9720
Tyres		15.5/80-24

\* Type Dependent

0/540-170/541-70/550-80



#### LIFT PERFORMANCE

		535-125 HiViz Stabilisers retracted	535-125 HiViz Stabilisers extended
Maximum lift capacity	kg	3500	3500
Lift capacity to full height	kg	1500	3500
Lift capacity at full reach	kg	200	1150
Lift height	m	12.28	12.07
Reach at maximum lift height	m	1.36	0.46
Maximum forward reach	m	8.10	8.06
Reach with 1 tonne load	m	5.31	8.06
Placing height	m	11.43	11.75

Complies with stability test EN 1459 Annex B. Chassis Levelling (Sway) with stabilisers retracted (Sway angle  $\pm 9^\circ$ ).



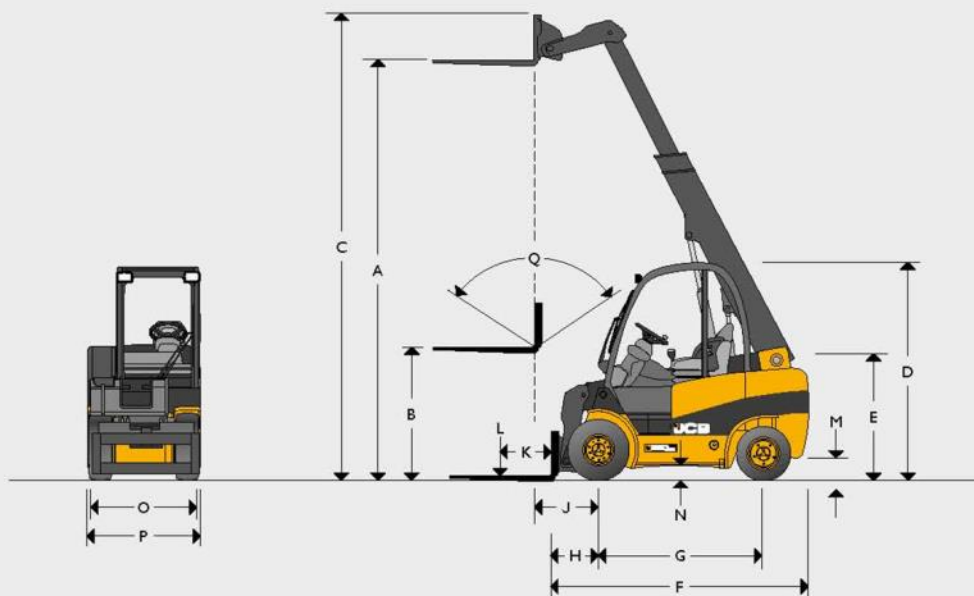
## SPECIFICATION

## TLT25/30/35 TELETRUK

### STATIC DIMENSIONS

TLT25 / TLT25HL / TLT30 / TLT30HL / TLT35

ENGINE FUEL TYPE: DIESEL OR LPG LIFT CAPACITY: UP TO 3.5 TONNES



### STATIC DIMENSIONS

Model		TLT35D
A	Lift height	mm 4400
B	Free lift (standard)	mm 1410
C	Height (boom extended)	mm 4975
D	Height of overhead guard (standard/low)	mm 2205/2105
E	Height of operators seat (high/low)	mm 1200/1180
F	Length to fork face	mm 3000
G	Wheelbase	mm 1950
H	Distance from c/l of front axle to fork face	mm 595
J	Distance from c/l of front axle to fork face (full height)	mm 795
K	Load centre	mm 500
L	Lift capacities (with sideload)	kg 3500
M	Ground clearance (lowest point)	mm 125
N	Ground clearance (wheelbase centre)	mm 155
O	Fork carriage width	mm 1200
P	Maximum width of machine	mm 1280
Q	Carriage tilt total* F/B variable through lift arc	degrees 111*

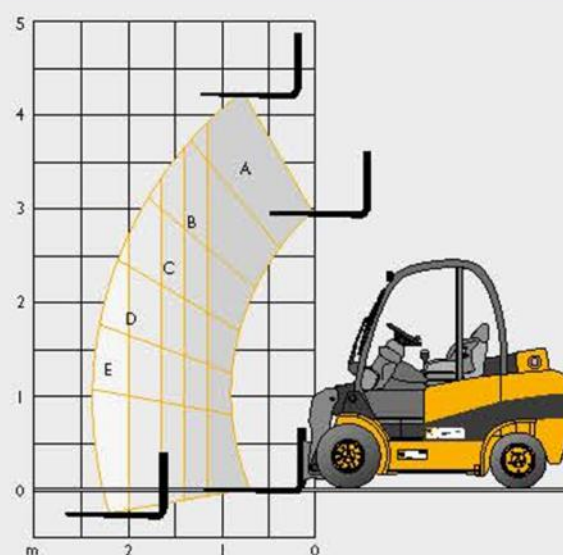
## GENERAL SPECIFICATION

Model		TLT35D
Engine manufacturer		JCB Diesel by Kohler
Tier compliant		Tier 4 Stage IIIB
Engine model		KD12504TCR
Engine output (gross power)	kW	46
Cubic capacity	cm <sup>3</sup>	2504
Rated	rpm	2600
Number of cylinders		4
Working pressure for attachments	bar	170
Oil flow for attachments	l/min	28 Std flow/70 Extra flow
Maximum reach ground level (500mm load centre)	mm	2280
Maximum reach boom horizontal (500mm load centre)	mm	2430
Turning radius	mm	2885
Aisle width 90° stacking 800 x 1200/1000 x 1200	mm	4480/4680
Weight unladen	kg	5100
Travel speed (standard)	km/h	20
Gradeability (laden/unladen)	%	25/21
Transmission		TCR
Park brake type		Hand
Shovel rated capacity	m <sup>3</sup>	0.6
Shovel struck capacity	m <sup>3</sup>	0.5
Shovel dump height (30°)	mm	2680
Shovel rollback angle at ground	degrees	33
Shovel width	mm	1385
Tyres PPS (semi solid), L (pneumatic)		PPS/L
Tyre size front (standard)		27 x 10 x 12
Tyre size rear (standard)		23 x 9 x 10
Diesel tank capacity	ltrs	55





## LIFT CAPACITIES – TLT35D



Capacity bands	TLT35
A	3500 kg
B	3000 kg
C	2500 kg
D	2100 kg
E	1700 kg
@ 2 metres	2100 kg





## JLG Toucan 800A General Specifications & Operators Maintenance

Platform Size	700 x 900 mm
Maximum Working Load	200 kg (2 persons + 40 kg material)
Slewing	360° non-continuous
Max. Platform Height	6.10 m
Horizontal Reach (from Centreline of machine) (from rear wheel edge) (from side wheel edge)	1.89 m 1.10 m 1.40 m
Up & Over Clearance	5.35 m
Max. Hydraulic System Pressure	23 MPa
Maximum Operating Wind Speed	45km/h (12.5m/s)
Maximum Horizontal Manual Force	400 N
Electrical System Voltage	24V
Gross Machine Weight (Platform Empty) before 2010	1950 kg
Gross Machine Weight (Platform Empty) Since 2010	2100 kg
Overall Length before 2010	1.90 m
Overall Length since 2010	1.94 m
Overall Height	1.99 m
Overall Width	0.99 m
Maximum Wheel Load	1400 kg
Maximum Travel Grade (Gradeability) With mast in stowed position and jib below horizontal	20 % (11°)
Maximum Travel Grade (Side slope) with mast in stowed position and jib below horizontal	5°
Tilt Sensor Setting	2°
Turning Radius Inside: Outside:	1.05 m 2.40 m
Vibration levels	The weighed root mean square acceleration value to which the arms are subjected (control levers) is inferior to 2.5m/s/s.
	The Weighed root mean square acceleration value to which the feet are subjected (platform floor) is inferior to 0.5m/s/s.
Acoustic pressure	The equivalent continuous 'A' weighed sound pressure level at the work station is <to 70dB(A).
	The measure has been taken by placing the sonometer at 1.60 m above the platform floor.



## JLG Toucan 1010 General Specifications & Operators Maintenance

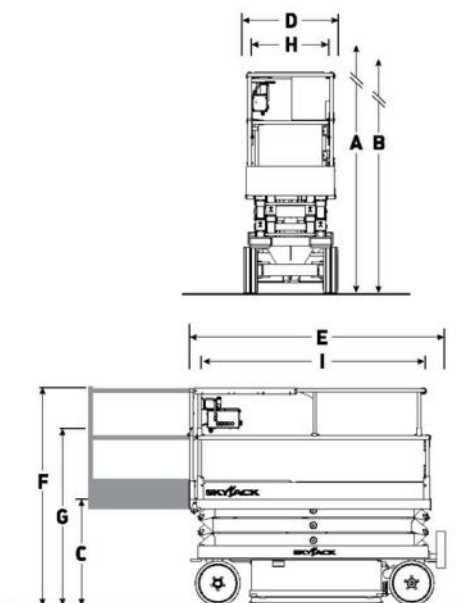
Basket Size	700 x 900 mm
Maximum Working Load	200 kg (2 persons + 40 kg material)
Slewing	360° non-continuous
Max. Platform Height	8.10 m
Horizontal Reach (from Centreline of machine) (from rear wheel edge) (from side wheel edge)	2.76 m 1.89 m 2.26 m
Up & Over Clearance	6.47 m
Max. Hydraulic System Pressure	23 MPa
Maximum Operating Wind Speed	45km/h (12.5m/s)
Maximum Horizontal Manual Force	400 N
Electrical System Voltage	24V
Gross Machine Weight (Platform Empty) before 2010	3300 kg
Gross Machine Weight (Platform Empty) Since 2010	3450 kg
Overall Length	2.90 m
Overall Height	1.99 m
Overall Width	0.99 m
Maximum Wheel Load	2200 kg
Maximum Travel Grade (Gradeability) With mast in stowed position and jib below horizontal	20 % (11°)
Maximum Travel Grade (Side slope) with mast in stowed position and jib below horizontal	5°
Tilt Sensor Setting	2°
Turning Radius Inside: Mast raised up to 2m Raised Outside: Mast raised up to 2m Raised	0 1.78 m  1.75 m 3.37 m
Vibration levels	The weighed root mean square acceleration value to which the arms are subjected (control levers) is inferior to 2.5m/s/s.
	The Weighed root mean square acceleration value to which the feet are subjected (platform floor) is inferior to 0.5m/s/s.
Acoustic pressure	The equivalent continuous 'A' weighed sound pressure level at the work station is <to 70dB(A).
	The measure has been taken by placing the sonometer at 1.60 m above the platform floor.





## SJIII 3220/26 ELECTRIC SCISSOR LIFTS

Dimensions	SJIII 3226
<b>A</b> Work Height	9.92 m
<b>B</b> Raised Platform Height	7.92 m
<b>C</b> Lowered Platform Height	1.14 m
<b>D</b> Overall Width	0.84 m
<b>E</b> Overall Length	2.32 m
<b>F</b> Stowed Height (Rails Up)	2.15 m
<b>G</b> Stowed Height (Rails Down)	1.91 m
<b>H</b> Platform Width (Inside Dimension)	0.71 m
<b>I</b> Platform Length (Inside Dimension)	2.13 m
Specifications	SJIII 3226
Extension Deck (Roll Out)	0.91 m
Ground Clearance (Stowed)	8.89 cm
Ground Clearance (Raised)	1.90 cm
Wheelbase	1.75 m
Weight	1,890 kg
Gradeability	30%
Turning Radius (Inside)	1.27 m
Turning Radius (Outside)	2.74 m
Lift Time (With Rated Load)	56 sec
Lower time (With Rated Load)	42 sec
Drive Speed (Stowed)	3.2 km/h
Drive Speed (Raised)	1.1 km/h
Maximum Drive Height	Full Height
Capacity (Overall)	227 kg
Distributed Capacity (Main Platform)	114 kg
Distributed Capacity (Extension Deck)	113 kg
Local Floor Load (With Rated Load)	897 kPa
Overall Floor Load (With Rated Load)	12 kPa
Maximum # of Persons (indoor/outdoor)	2/0
Tyre Type	Solid, N/M
Tyre Size	16 x 5 x 12



**Skyjack UK**  
Unit 1, Maes-y-Clawdd  
Meesbury Road Industrial Estate  
Oswestry, Shropshire, SY10 8NN  
Tel: +44 1691 676235  
Fax: +44 1691 676239  
Email: [info@skyjackeurope.co.uk](mailto:info@skyjackeurope.co.uk)

**Skyjack SAS (France)**  
74 Rue Sibert  
F-42400 Saint Chamond  
France  
Tel: +33 (0) 4 78 73 53 32  
Tel: +33 (0) 4 78 73 05 68  
Fax: +33 (0) 4 78 56 52 42

**Skyjack Hebebühnen GmbH  
(Germany)**  
Därmanbusch 2a  
D-58456 Witten  
Tel: +49 (0) 2302 20 26 909  
Fax: +49 (0) 2302 20 25 671

**Skyjack AB (Sweden)**  
Agnesbergsvägen 28  
424 38 Agnesberg  
Sweden  
Tel: +46 (0) 31 21 22 45  
Fax: +46 (0) 31 787 65 10

[www.skyjack.com](http://www.skyjack.com)

This brochure is for illustrative purpose only and based on the latest information at the time of printing. Skyjack Inc. reserves the right to make changes at any time, without notice, to specifications, standard and optional equipment. Consult the Operating Maintenance and Parts Manuals for proper procedures. CE marked work platforms are in conformance to Machinery Directive 2006/42/EC.

CE  
EU/ENG/01/2017



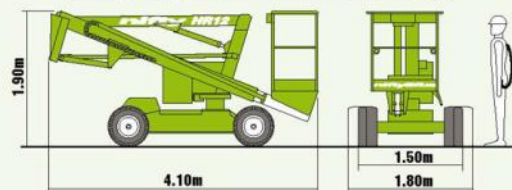
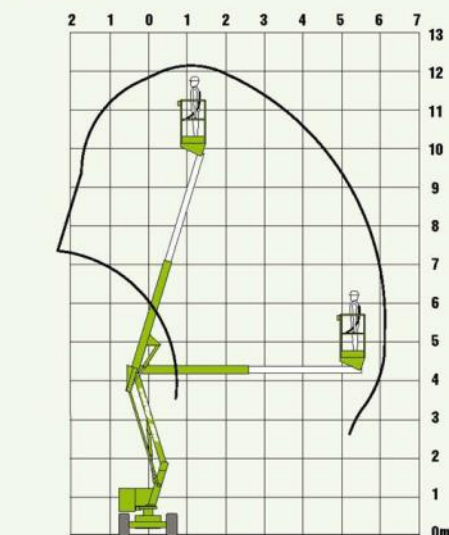
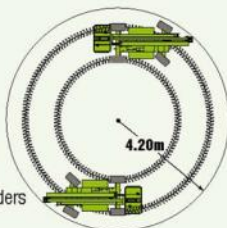
# nifty

## Heightrider 12

The Nifty **Height Rider 12** is one of the most versatile and reliable machines in its class. It is specifically designed to give maximum reach performance from the lightest, most compact base possible. A telescopic upper boom gives improved accuracy when positioning the platform and superb manoeuvrability makes it ideal for a wide range of applications.

### SAFETY FEATURES

- Automatic Failsafe Brakes
- Tilt Alarm
- Foam Filled or Solid Tyres
- Manual Descent with Hand Pump
- Dual Controls (Platform & Base)
- Lock Valves on all Hydraulic Cylinders
- Dual Harness Points
- CE Mark



Due to a policy of continuing development and improvement, Niftylift reserves the right to change any specification without notice. Please confirm exact specification before ordering.



The **HR12's** Bi-Energy option allows it to work for extended periods inside and outside, making it the perfect all-rounder.

### SPECIFICATIONS

<b>Working Height</b>	12.20m	40ft
<b>Platform Height</b>	10.20m	33ft 5in
<b>Working Outreach</b>	6.10m	20ft
<b>Slew</b>	360°	
<b>Width - Standard</b>	1.80m	5ft 11in
<b>- Narrow</b>	1.50m	4ft 11in
<b>Height</b>	1.90m	6ft 3in
<b>Length</b>	4.10m	13ft 5in
<b>Minimum Weight - Standard</b>	2,860kg*	6,310lbs*
<b>- Narrow</b>	3,100kg*	6,830lbs*
<b>Turning Radius - Outside</b>	4.20m	13ft 9in
<b>Platform Capacity</b>	200kg	440lbs
<b>Platform Size</b>	1.10m x 0.65m	3ft 7in x 2ft 2in
<b>Drive Speed</b>	2.1mph	3.4 kph
<b>Gradeability</b>	25% (14°)	
<b>Control System</b>	Fully Proportional Hydraulic	
<b>Power Options</b>	Battery Only	
	Petrol, Diesel or LPG Only	
	Bi-Energy (Engine & Battery)	

\*Weights may vary according to specification, please confirm before ordering.



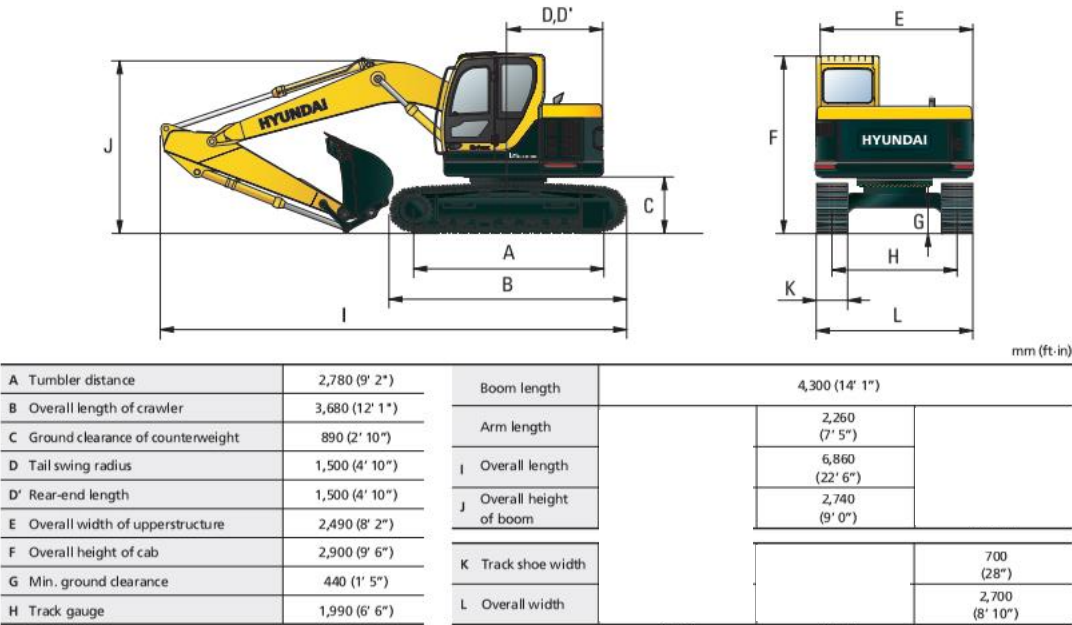
### Upright X26N Specification

Platform size w/ Extension	1.17 m x 2.21 m [44.25 in. x 87 in.]
Max. Platform Capacity Standard On Extension	454 kg [1000lbs.] 113 kg [250lbs.]
Max. No of occupants Standard (total) On Extension	4 people 2 people outdoor 1 person
Height Working Height Max. Platform Height Min. Platform Height	9.93 m [32.58 ft.] 7.93 m [26 ft.] 1.09 m [43 in.]
Dimensions Weight Overall Width Overall Height Overall Height, Rails Lowered Overall Length, Extension In Overall Length, Extension Out	2153 kg [4747 lbs.] 1.22 m [48 in.] 2.19 m [83.5 in.] 1.98 m [78 in.] 2.35 m [92.5 in.] 3.26 m [128.5 in.]
Drivable Height	7.93 m [26 ft.]
Drive Speed Platform Lowered Platform Raised	0 to 3.2 km/h [0 to 2.0 mph] 0 to 1 km/h [0 to 0.62 mph]
Energy Source	24 Volt Battery Pack (4-220 A Hour, 6 Volt Batteries, min. wt. 28.12 kg [62 lbs.] each)
Motor	24 Volt 4 Horse Power DC Electric Motor
System Voltage	24 Volt DC
Battery Charger	25 A1 110/220 V AC
Battery Duty Cycle	25% for 8 Hours
Hydraulic Tank Capacity	15 L
Maximum Hydraulic Pressure	207 bar [3000 psi]
Hydraulic Fluid Normal Temperature (>32° F [0° C]) Low Temperature (<32° F [0° C]) Extreme Temperature (<0° F [-17° C])	ISO #46 ISO #32 ISO #15
Lift System	One Single Stage Lift Cylinder
Lift Speed	Raise, 45 sec/Lower 40 sec.
Control System	Proportional Control Handle with Interlock Switch, Rotary Drive/Lift Switch, and Red Mushroom EMERGENCY STOP Switch
Drive System	Dual Front Wheel Hydraulic Motors
Tires	381 mm [15 in.] Diameter Solid Rubber, non-marking
Parking Brake	Dual Spring Applied, Hydraulic Release
Turning Radius	203 mm [8 in.] Inside
Maximum Gradeability	12° [22%]
Wheel Base	1.9 m [74.75 in.]
Guardrails	1.02 m [40 in.] High

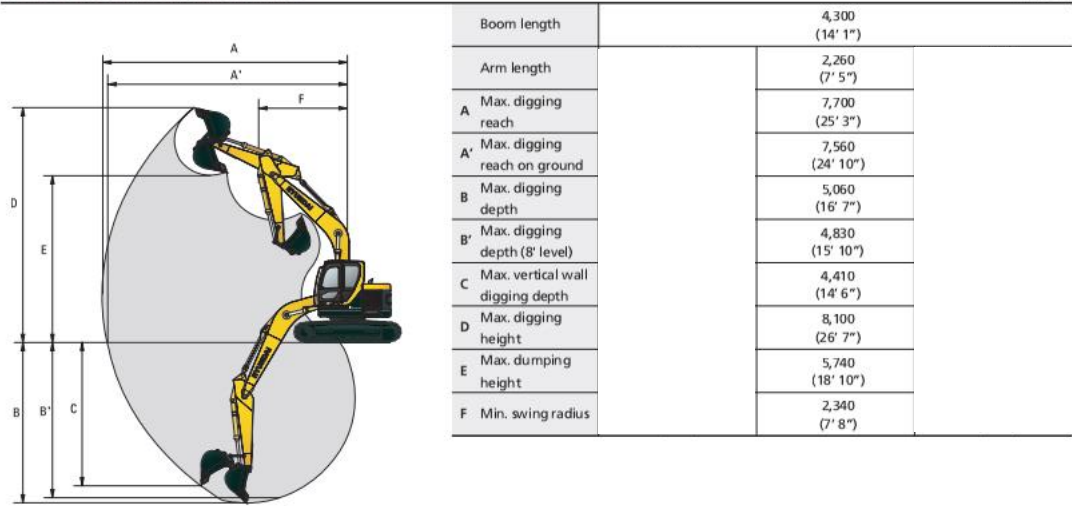


# Dimensions & Working Range

## R125LCR-9A DIMENSIONS



## R125LCR-9A WORKING RANGE

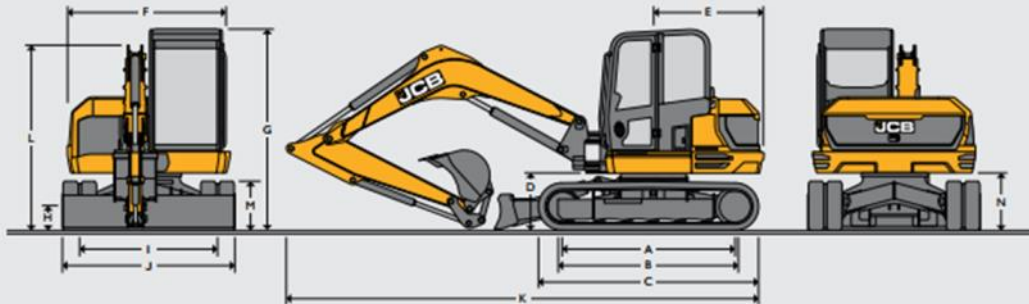




## SPECIFICATION

85Z-1 MEDIUM EXCAVATOR

### STATIC DIMENSIONS



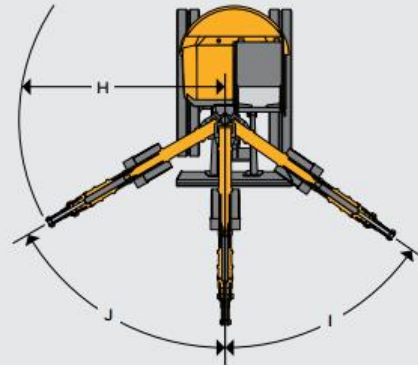
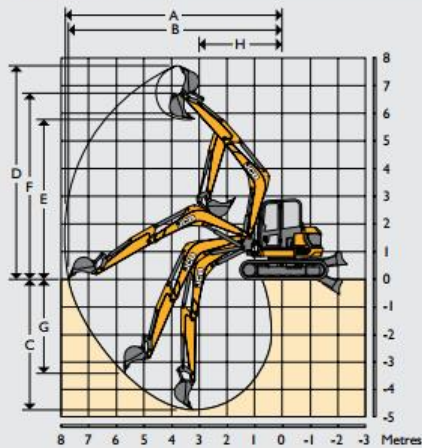
Machine model	85z-1	
A Sprocket idler centres	mm	2325
B Track length on ground	mm	2325
C Undercarriage overall length – rubber	mm	2950
Undercarriage overall length – steel		2900
D Kingpost clearance	mm	793
E Tailswing radius	mm	1145
F Overall width of superstructure	mm	2168
G Height over cab	mm	2706
H Ground clearance	mm	350
I Track gauge	mm	1850
J Width over tracks (450 shoes)	mm	2300
K Transport length with standard dipper	mm	5833
L Transport height with standard dipper	mm	2706
M Track height	mm	650
N Counterweight clearance	mm	762

### ENGINE

Machine model	85z-1	
Model	Stage IIIB Tier 4 Final KDI 2504 TCR	
Fuel	Diesel	
Cooling	Water cooled	
Gross power ISO 14396	kW (hp) @ 2200 rpm	48
Net power	kW (hp) @ 2200 rpm	45.4
Gross torque ISO 14396	Nm @ 1500 rpm	305
Displacement	cc / litres	2500
Gradeability	degrees	30
Starter motor	kW (hp)	2
Battery	volt / Ah	12V, 750
Alternator	volt / amps	12V, 100



## WORKING RANGE



		85z-1	
Boom length	mm	2900	
Dipper length	mm	1650 / 2000 / 2100	
A Max digging reach	mm	6596 / 6933 / 7029	
B Max digging reach on ground	mm	6401 / 6748 / 6848	
C Max digging depth – dozer up	mm	3234 / 3584 / 3684	
Max digging depth – dozer down	mm	3615 / 3625 / 3715	
D Max digging height	mm	6487 / 6758 / 6836	
E Max dump / load-over height	mm	4674 / 4946 / 5023	
F Max height to dipper nose pivot pin	mm	5547 / 5819 / 5896	
G Max vertical wallcut depth	mm	2525 / 2849 / 2941	
H Min. front swing radius (no offset)	mm	2847 / 3002 / 3047	
Min. front swing radius (fully offset)	mm	2478 / 2620 / 2660	
I Boom swing left	degrees		
J Boom swing right	degrees		
Bucket rotation	degrees		
Dipper rotation	degrees	114	
Bucket tearout	kN		57.1
Dipper tearout	kN	43.8	
Slew speed	rpm		10

## DOZER

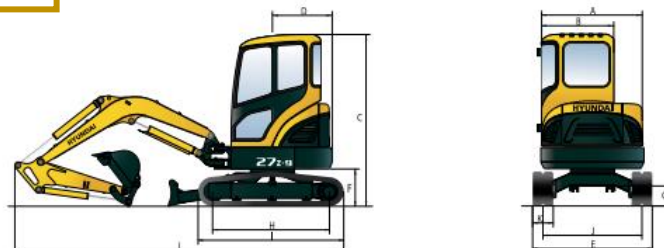
Machine model		85z-1	
Dozer length	mm		1497
Max height above ground	mm		471
Dig depth below ground	mm		461
Approach angle (degrees)	mm		27.8
Width	mm		2320
Height	mm		473
Reach in front of tracks	mm		615





## Dimensions & Working Range

### R27Z-9 DIMENSIONS

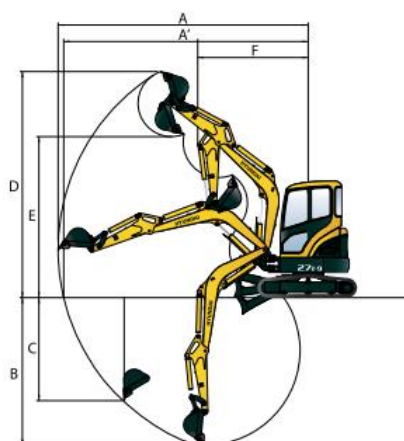


mm (ft-in)

A	Overall width of upper structure	1,485 (4' 10")	G	Ground clearance	290 (0' 11")
B	Overall width of cab	1,050 (3' 5")	H	Tumbler distance	1,550 (5' 1")
C	Overall height of cab	2,500 (8' 2")	I	Track length	1,970 (6' 6")
D	Tail swing radius	775 (2' 7")	J	Track gauge	1,250 (4' 1")
E	Overall width	1,550 (5' 1")	K	Track shoe width	300 (0' 12")
F	Clearance under counterweight	540 (1' 9")	L	Overall length	4,180 (13' 9")

### R27Z-9 WORKING RANGE

mm (ft-in)



	Boom length	2,030 (6' 8")
	Arm length	1,120 (3' 8")
A	Max. digging reach	4,650 (15' 3")
A'	Max. digging reach at ground	4,515 (14' 10")
B	Max. digging depth	2,500 (8' 2")
C	Max. vertical wall digging depth	2,085 (6' 10")
D	Max. digging height	4,270 (14' 0")
E	Max. dumping height	2,890 (9' 6")
F	Min. swing radius	2,055 (6' 9")

- \* Standard and optional equipment may vary. Contact your Hyundai dealer for more information. The machine may vary according to International standards.
- \* The photos may include attachments and optional equipment that are not available in your area.
- \* Materials and specifications are subject to change without advance notice.
- \* All imperial measurements rounded off to the nearest pound or inch.

PLEASE CONTACT

www.hyundai-ce.com

2010.03 Rev 0

## HYUNDAI HEAVY INDUSTRIES CO., LTD. CONSTRUCTION EQUIPMENT

Head Office (Sales Office)  
1 JEONHA-DONG, DONG-GU, ULSAN, KOREA TEL: (82) 52-202-7970, 7729, 0971 FAX: (82) 52-202-7979, 7720

U.S. Operation: Hyundai Construction Equipment Americas, Inc.  
955 ESTES AVENUE, ELK GROVE VILLAGE, IL, 60007, U.S.A. TEL: (1) 847-437-3333 FAX: (1) 847-437-3574

European Operation: Hyundai Heavy Industries Europe N.V.  
VOSSENDAAL 11, 2440 GEEL, BELGIUM TEL: (32) 14-56-2200 FAX: (32) 14-59-3405

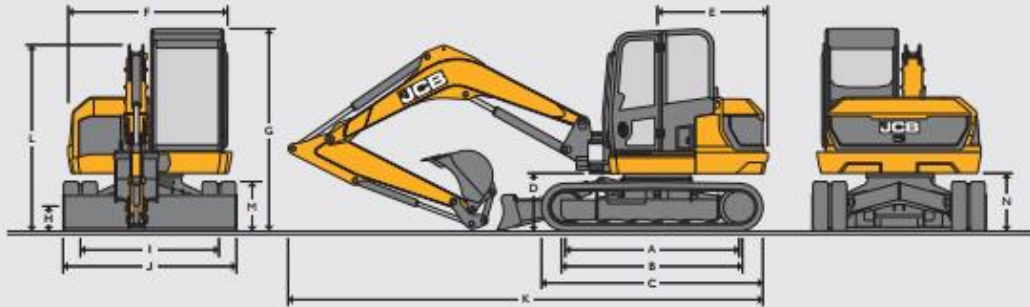
India Operation: Hyundai Construction Equipment India Pvt., Ltd.  
PLOT NO. A-2, CHAKAN INDUSTRIAL AREA, VILL - KHALUMBRE, TALUK - KHED, DIST - PUNE 410 501, INDIA  
TEL: (91) 21-3538-1700 FAX: (91) 21-3530-1712



## SPECIFICATION

## 67C MIDI EXCAVATOR

### STATIC DIMENSIONS



Machine model		67C-I
A Sprocket idler centres (rubber)	mm	1985
B Track length on the ground	mm	1985
C Undercarriage overall length (rubber)	mm	2490
Undercarriage overall length (steel)	mm	2490
D Kingpost clearance	mm	620
E Tailswing radius	mm	1385
F Overall width of superstructure	mm	1798
G Height over cab	mm	2582
H Ground clearance	mm	240
I Track gauge	mm	1600
J Width over tracks	mm	2000
K Transport length - standard dipper	mm	5600
L Transport height	mm	2600
M Track height	mm	560
N Counterweight clearance	mm	637

### ENGINE

Machine model		67C-I
Model		Tier 4 Final KDI 1903
Fuel		Diesel
Cooling		Water Cooled
Gross power	kW @ 2200 rpm	41
Net power	kW @ 2200 rpm	38.4
Gross torque	Nm @ 1500 rpm	225
Displacement	cc	1903
Gradeability	degrees	30
Starter motor	kW	2
Battery	volt/amps	12V / 75Ah
Alternator	amps	80 (100)



#### UNDERCARRIAGE

Machine model		67C-1
No of top rollers		1
No of bottom rollers		4
Track width rubber (STD)	mm	400
Track width steel	mm	400 / 550
Ground bearing pressure STD tracks	kg/cm <sup>2</sup>	0.42
Ground clearance	mm	240
Track tensioning		Grease
Travel speed - Low	kph	2.6
Travel speed - High	kph	4.6
Tractive effort	kN	54.5

#### HYDRAULIC SYSTEM

Machine model		67C-1
Pump		72cc
Nominal output (@ rated)	lpm	144
Excavator/track main relief	bar	250
Slew main relief	bar	216
Auxiliary hydraulic flow (Low)	bar	190
Auxiliary hydraulic flow (High)	bar	190
Auxiliary hydraulic flow (Low)	lpm	25
Auxiliary hydraulic flow (High)	lpm	90
Hydraulic motors		Piston

#### WEIGHTS

Machine model		67C-1
Operating weight* (400mm rubber tracks)	kg	6760
Transport weight (400mm rubber tracks)	kg	6685
With FOGs guard - stage I	kg	+14
With FOGs guard - stage I Aircon	kg	+49
400mm steel tracks	kg	+148
550mm steel tracks	kg	+270
400mm Geo grip tracks	kg	+170
Ground bearing pressure 400 tracks	kg/cm <sup>2</sup>	0.42
Ground bearing pressure 550 tracks	kg/cm <sup>2</sup>	0.31
With wide dozer (2170)	kg	+9
With 4 way dozer (Hydraulic quickhitch weight = 95kg)	kg	+172
With long dipper (2000)	kg	Standard
With long dipper (1900)	kg	N/A
With short dipper (1650)	kg	-34

\*Operating weight to ISO 6016 including cab, rubber tracks, standard dipper, 600mm bucket, full tanks and a 75kg operator.

\*Shipping weight to ISO 6016 is mass of the base machine without an operator, with the fuel level at 10% of tank capacity.



#### OPERATOR ENVIRONMENT

Machine model		67C-I
Cab/canopy height	mm	1554
Cab/canopy height with FOGS guard level I	mm	1643
Cab/canopy length	mm	1942
Cab/canopy width	mm	1040
Distance from seat base to roof	mm	1120
Door aperture width	mm	612

#### SERVICE CAPACITIES

Machine model		67C-I
Fuel tank		83
Engine coolant		10
Engine oil		7.5
Hydraulic system		92.5
Hydraulic tank		57.2

#### STANDARD EQUIPMENT

Tilting cab, Fully glazed ROPS\* & TOPS certified cab with JCB Impact Protection front screen, Intermittent wiper with wash/wipe, Roof mounted worklights, 3 speed heater/demister with 9 adjustable air vents, Colour LCD display, Digital dock, Internal lockable toolbox, Cup holder, Coat hook, 12v accessory socket, Interior light, Full audio/visual warning systems, Radio ready kit, Auto idle throttle, Below idle system, 2 digging modes (Eco & Heavy), ISO servo controls with electro-hydraulic dozer lever, Electro-proportional thumb controlled high flow double acting auxiliary, 10 selectable auxiliary flow rates, Joystick mounted hammer switch, Electronic single/double acting auxiliary changeover valve, Neutral start, Full control isolation, "2 go" hydraulic isolation, Midback suspension seat, 2 piece removable floor mat, Beacon ready kit, Two speed tracking, Auto-kickdown track motors, 400mm short pitch rubber tracks, Double element air cleaner, Heavy-duty alternator, Heavy-duty battery, Hydraulic slew braking with disc type park brake, ORFS hydraulics, Colour coded hydraulic hoses, Bushed kingpost (67c), 500 hour dig end greasing intervals, Heavy duty boom cylinder guard, Protected boom worklight, 2000mm dipper (67c), 1900mm dipper (65R), 2 position bucket tipping link - Speed & Power, Quick release auxiliary couplers, 100% steel bodywork.

#### OPTIONAL EQUIPMENT

Air-conditioning, Adjustable sunblind, FOPS guard stage I, 400mm or 550mm steel tracks, 400mm Geo Grip Road Liner tracks, Fan & chaff guards, Battery isolator (standard for EU), High back seat or deluxe heated high back air-suspension seat, Radio installation, Electro-proportional thumb controlled low flow auxiliary, Hose burst check valve lifting kit (dozer, boom & dipper), Bucket-to-grab change over valve, Mechanical quickhitch, Hydraulic quickhitch, Hydraulic quickhitch ready pipework, General purpose digging buckets, Ditch/grading buckets, Hydraulic hammers, Rotating/strobe beacon, Travel alarm, Face fan, Toolkit, Greasegun & cartridge, Fire extinguisher, Exterior cab mounted mirrors, Interior mirror, Electric refuelling pump, JCB Immobiliser (Unique key or keypad system), CESAR datatag (UK only), Dozer float, Angled dozer blade (67c), Dual pattern controls (ISO/SAE change-over), Front screen guard, Short & long dipper options, Thumb ready dipper, LiveLink, Special paint options, Front pair of LED roof mounted worklights.

\* Dependant on specification.

#### DOZER

Machine model		67C-I
Dozer length	mm	1466
Max height above ground	mm	473
Dig depth below ground	mm	562
Approach angle	degrees	26
Width	mm	2018
Height	mm	417
Reach in front of tracks	mm	787



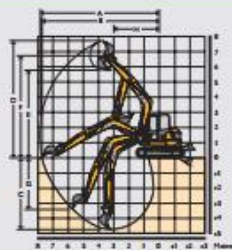
## NOISE AND VIBRATION – 67C-I

		Uncertainty	Measurement conditions
Noise at the operator station (LpA)	73dB	(KpA)	1db ISO 6396: 2008
Noise emission from the machine (LWA)	96dB	(KWA)	1db ISO 6395: 1988
Hand arm vibration (m/s <sup>2</sup> )			
Tracking duty	2.93**	(K)	1.47 EN ISO 5349-2: 2001 (Based upon a test cycle defined in SAE J 1166)
Low idle and excavating duty	≤2.5	(K)	* EN ISO 5349-2: 2001 (Based upon a test cycle defined in SAE J 1166)
Whole body vibration (m/s <sup>2</sup> )	0.49	(K)	0.25 ISO 2631-1: 1997 (Based upon a test cycle defined in SAE J 1166)

\* Based on 50% uncertainty of measurement.

\*\* Using foot operation for long periods of tracking will prevent exposure to Hand-Arm Vibration above the action level.

## WORKING RANGE



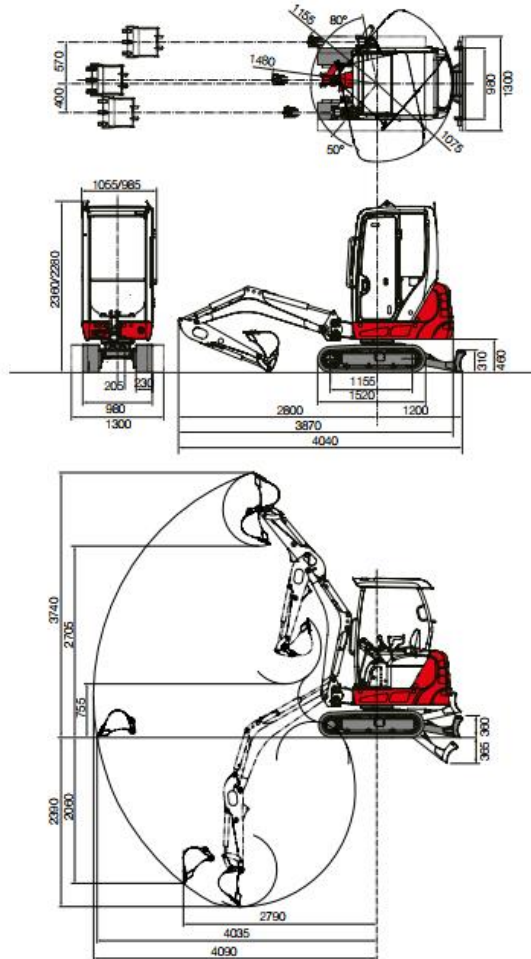
		67C-I
Dipper length	mm	1650 / 2000
Boom length	mm	2900
A Max digging reach	mm	6285 / 6617
B Max digging reach on ground	mm	6175 / 6504
C Max digging depth - dozer up	mm	3704 / 4054
Max digging depth - dozer down	mm	3720 / 4070
D Max digging height	mm	5836 / 6075
E Max dump height	mm	4041 / 4281
F Max height to dipper nose pivot pin	mm	4920 / 5153
G Max vertical wallcut depth	mm	2603 / 2963
H Min. front swing radius (no offset)	mm	2579 / 2637
Min. front swing radius (fully offset)	mm	2327 / 2384
I Boom swing left	degrees	60
J Boom swing right	degrees	60
Bucket rotation	degrees	186 (Power) / 188 (Speed)
Dipper rotation	degrees	118
Bucket tearout kN (power position)	kN	47.6
Dipper tearout kN	kN	30.6 / 29.6
Slew speed	rpm	9

Courtesy of Machine.Market



# COMPACT MINI EXCAVATOR

# TB216



## TB216

Standard UK Specification - Long Dipper

Engine	
Make	YANMAR
Model	3TNV70
Rated Output (kW/rpm)	11.6 / 2400
Maximum Torque (Nm)	62.7
Cylinders	3
Displacement (cc)	864
Electrical System	12V 40A
Dimensions & Weight	
Operating Weight inclusive of bucket and fuel: cab/canopy (kg)	1800 / 1680
Overall Length (mm)	3870
Width cab/canopy (mm)	1055 / 985
with extended track (mm)	1300
Height cab/canopy (mm)	2360 / 2280
Ground Clearance (mm)	205
Min. Front Swing Radius (mm)	1480
Tail Swing Radius (mm)	1076
Dozer Blade (W x H) (mm)	900 / 1300 x 310
Operating Information	
Max Digging Depth (mm)	2390
Max Dump Height (mm)	2705
Max Reach at Ground Level (mm)	4035
Max Vertical Digging Depth (mm)	2060
Max Bucket Digging Force (kN)	14
Max Arm Digging Force (kN)	8.2
Hydraulic System	
Set Pressure (bar)	210
Pump Type	Variable x 2 + Gear x 2
1st Aux Max Flow l/min	33
Pressure bar	210
2nd Aux Max Flow l/min	10
Pressure bar	200
Swing System	
Boom Swing Angle (F/L)	60° / 80°
Slew Speed (rpm)	9.2
Undercarriage	
Traction Motor	Piston
Traction Drive	Epicyclic Gearing
Traction Brake	Disc
Track Width (mm)	230
Ground Contact Length (mm)	1155
Ground Pressure (kpa)	31 / 29.4
Travel Speed (km/h)	2.2-4.2
Maximum Gradeability	16°
Capacities	
Hydraulic System (l)	24.6
Fuel Tank (l)	22
Engine Lubrication (l)	2.8
Cooling System (l)	3.8

All dimensions unless otherwise stated are in millimetres.



## Wacker Neuson 803



**WACKER  
NEUSON**  
*all it takes!*

### Technical specifications

803 excavator with dual power option

#### Operating data

Shipping weight min.	2,105 lb
Operating weight	2,319 - 2,452 lb
Biting force max.	1,012 lbf
Breakout force max.	2,001 lbf
Digging depth max.	69.41 in
Dumping height	79.2 – 80.1 in
Digging radius max.	121.7 in
L x W x H	111.3 x 27.6 x 89 in

#### Engine / Motor

Engine / Motor manufacturer	Yanmar
Engine / Motor type	3TNV74F
Engine / Motor	Liquid-cooled, 3-cylinder diesel engine
Displacement	60.57 in <sup>3</sup>
RPM / speed	2,500 rpm
Engine performance according to ISO	15.41 hp
Battery	20 Ah
Fuel tank capacity	1.8 US gal

#### Hydraulic system

Duty pump	Gear pumps
Flow rate	5.3 US gpm
Operating pressure for working and driving hydraulics	2,466 psi
Operating pressure Slewing gear	1,015 psi
RPM / speed Revolving superstructure	8 rpm
Hydraulic oil tank	3.7 US gal

#### Undercarriage

Travel speed	1.1 mph
Chain width	7.1 in
Ground clearance	5.1 in

#### Dozer Blade

Width min.	27.6 in
Height	7.9 in
Stroke - Above ground	7.76 in



## Wacker Neuson 803



Stroke - Below ground	6.85 in
<b>Sound level</b>	
Sound level (LwA) according to 2000/14/EC	93 dB(A)
Cabin - specified sound pressure level LpA	77 dB(A)

Electro-hydraulic unit HPU 8

### Operating data

L x W x H	36.6 x 28.3 x 32.9-39.4 in
-----------	----------------------------

### Engine / Motor

Engine / Motor	3-phase electric motor
Engine performance	10 hp
Voltage	480 V
Input current	16 A
Frequency	60 Hz

### Hydraulic system

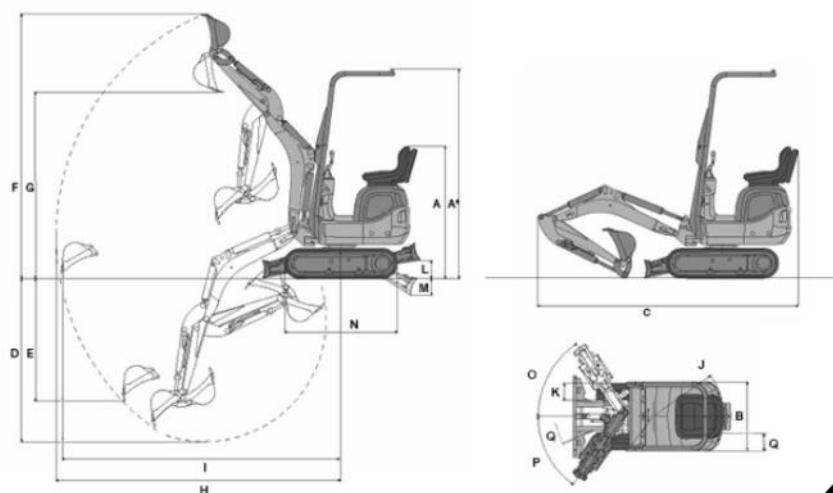
Flow rate	5.2 US gpm
Operating pressure	2,756 psi
RPM / speed	1,728 rpm
Hydraulic oil tank	2.4 US gal
Hose	39.4 ft

### Undercarriage

### Dozer Blade

### Sound level

Dimensions





## Wacker Neuson 803

A*	Height	89 in
A	Height	56.2 in
B	Width - Cab	28.7 in
B	Width - Undercarriage retracted	27.6 in
B	Width - Undercarriage extended	33.9 in
C	Transport length	111.3 in
D	Digging depth max.	69.4 in
E	Insertion depth	52 in
F	Insertion height	112.7 in
G	Dump height max.	79.2 in
H	Digging radius max.	121.7 in
I	Range	119.3 in
J	Rear swivel radius	29.4 in
K	Arm displacement to centre of bucket, right side	9.6 in
K	Arm displacement to centre of bucket, left side	11.1 in
L	Lift height - Above ground	7.8 in
M	Scraping depth - Below ground	7 in
N	Length - Track	48 in
O	Turning angle - Boom system to the right	56 °
P	Turning angle - Boom system to the left	55 °
Q	Chain width	7.1 in
R	Boom slewing radius	42.7 in

### Please note

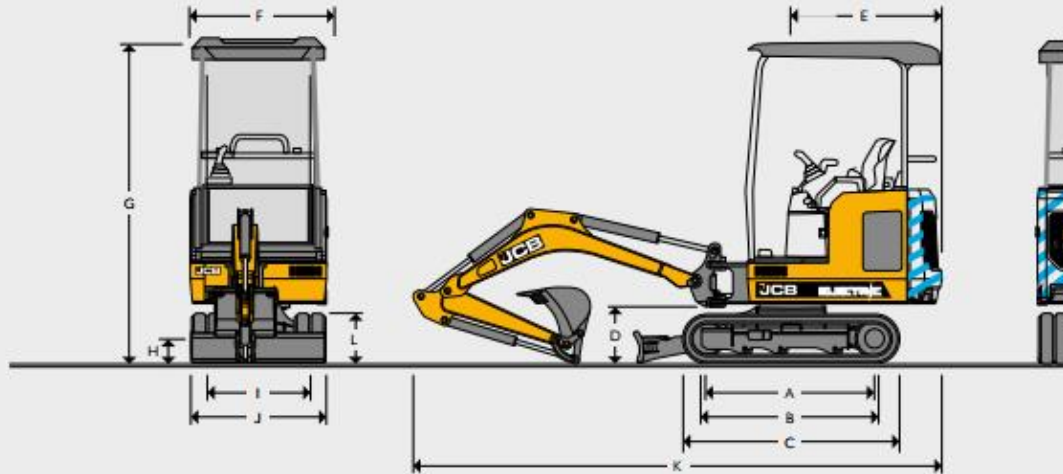
that product availability can vary from country to country. It is possible that information / products may not be available in your country. More detailed information on engine power can be found in the operator's manual; the stated power may vary due to specific operating conditions. Subject to alterations and errors excepted. Applicable also to illustrations.  
Copyright © 2017 Wacker Neuson SE.



## SPECIFICATION

## 19C-1E ELECTRIC MINI EXCAVATOR

### STATIC DIMENSIONS



### STATIC DIMENSIONS

A	Sprocket idler centres	mm	1218
B	Track length on ground	mm	1220
C	Undercarriage overall length – rubber	mm	1578
	Undercarriage overall length – steel	mm	1578
D	Kingpost clearance	mm	409
E	Tailswing radius	mm	1103
F	Overall width of superstructure	mm	996
G	Height over canopy	mm	2345
G	Height over cab	mm	2328
H	Ground clearance	mm	162
I	Track gauge – retracted/extended	mm	750 – 1110
J	Width over tracks / rubber / steel – retracted	mm	980
	Width over tracks / rubber / steel – extended	mm	1330
K	Transport length	mm	3860 – 3815
L	Track height	mm	367
M	Counterweight clearance	mm	434

### POWER SOURCE

Battery Type	Manganese laminated Lithium-ion
Gross Capacity	19.8 kWh
System Voltage	48V
Zero Emissions at point of use	

### CHARGING

On-board charger allowing direct connection to

Indicative Charge Time - 20-80%, subject to environmental conditions.

Off-board fast charge - 0-100% @ 415V

Charging cable plug type

### MOTOR

Motor Type	3
Motor Power	7k
Operating Modes	L: G: H:

### UNDERCARRIAGE

No. of bottom rollers

Track width rubber

Travel speed – low

Travel speed – high

Traction effort



ction to AC mains power supply

ct to	On-board @ 110V – 10.5 hrs
	On-board @ 230V – 5 hrs
	2.5 hrs
	16A 110V (Yellow)
	16A 230V (Blue)
	16A 415V (Red)

3 Phase AC Permanent Magnet  
7kW continuous, 20kW peak  
L: 1200rpm  
G: 1600rpm  
H: 1800rpm

	Retractable
	3
mm	230
kph	2.4
kph	4.1
kN	13.2

#### HYDRAULIC SYSTEM

Pump	cc	18
Nominal output @ max rpm	lpm	42
Excavator/track main relief pressure	bar	235
Slew main relief pressure	bar	167
Auxiliary hydraulic pressure (Aux 1)	bar	200
Auxiliary hydraulic pressure (Aux 2)	bar	200
Auxiliary hydraulic flow (Aux 1)	lpm	32
Auxiliary hydraulic flow (Aux 2)	lpm	32
Hydraulic pump		Piston

#### WEIGHTS

		Canopy	Cab
Operating weight	kg	1902	2037
Long dozer	kg	9	
Mechanical quickhitch	kg	14	
Hydraulic quickhitch (without hoses)	kg	24	
Gravemaster dipper	kg	5	
Ground bearing pressure (rubber tracks)	kg/cm <sup>2</sup>	0.36	
Transport weight (operator weight – 75kg)**	kg	1827	1962

\*Operator weight to ISO 6016 including cab/canopy, rubber tracks, 1100 dipper, 300mm bucket, 75kg operator. \*\*Transport weight to ISO 6016 is mass of the base machine without operator.

#### SERVICE CAPACITIES

Hydraulic system	ltr	28
Hydraulic tank	ltr	15

#### OPERATOR ENVIRONMENT

		Canopy	Cab
Canopy/cab height	mm	1364	1347
Canopy/cab length	mm	1427	1202
Canopy/cab width	mm	978	1040

#### DOZER

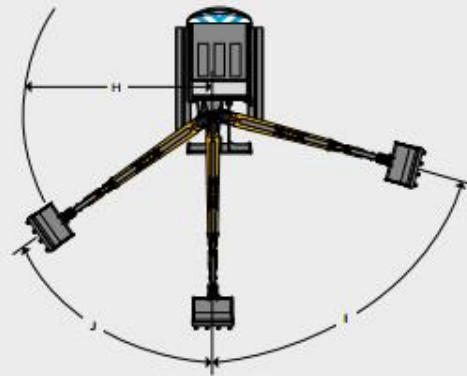
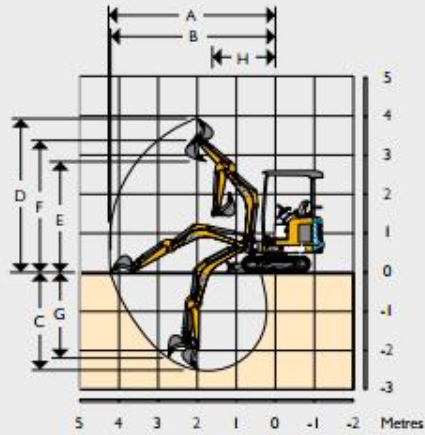
Dozer length (STD) centre of boss	mm	787
Max. height above ground	mm	239
Dig depth below ground	mm	225
Approach angle	degrees	25.3
Width (without wings)	mm	980
Width (with wings)	mm	1340
Height	mm	234



## SPECIFICATION

## 19C-1E ELECTRIC MINI EXCAVATOR

### WORKING RANGE



		1100mm Dipper
Boom length	mm	1800
A Max. digging reach	mm	4043
B Max. digging reach on ground	mm	3981
C Max. digging depth – dozer up	mm	2421
Max. digging depth – dozer down	mm	2576
D Max. digging height	mm	3667
E Max. dump/load-over height	mm	2637
F Max. height to dipper nose pivot pin	mm	3154
G Max. vertical wallcut depth	mm	2139
H Min. front swing radius (no offset)	mm	1517
Min. front swing radius (fully offset)	mm	1196
I Boom swing left	degrees	75
J Boom swing right	degrees	55
Bucket rotation	degrees	201
Dipper rotation	degrees	126
Bucket tearout (power position)	kN	18
Dipper tearout	kN	9.1
Slew speed	rpm	7.9



## EQUIPMENT

### SERVICE AND MAINTENANCE

500 hours dig end greasing intervals	•
Grease gun & cartridge	•
Toolkit	+

### TRACKS AND UNDERCARRIAGE

230mm short pitch rubber tracks	•
Two speed tracking	•
Retractable undercarriage	•
Extendable dozer blade	•
Heavy duty recoiled tracked tensioners	•
Long dozer blade	+
Auto kick down track motors	•
Auto Kick-up	•

### OPERATOR STATION

On-board charger	•
LED worklights	•
Full audio visual warning systems	•
Full control isolation	•
12 volt power socket	•
ISO servo controls	•
Static seat	•
Electro-proportional thumb controlled dual flow auxiliary	•
Dual patterned controls (ISO/SAE changeover)	+
Vinyl suspension seat	•
Track lever pedals	•

### POWER SOURCE

4 power packs	•
---------------	---

### HYDRAULICS

Hydraulic slew travel lock	•
Variable displacement pump	•
Straight line travel circuit	•
ORFS hydraulics	•
Quick release auxiliary couplers	•
Double acting auxiliaries	•
Auxiliary vent	•

### PROTECTION AND SAFETY

ROPS, TOPS & FOPS certified cab/canopy	•
Internal lockable toolbox	•
Protected boom work light	•
2GO hydraulic isolation	•
Cesar Data Tag (UK ONLY)	•
Disconnect switch	•
Seat belt engaged green beacon	+
JCB LiveLink	•
Pin pad immobiliser	+
Polycarbonate front screen protection	+
Travel alarm	+

### EXTERNAL EQUIPMENT

Charging leads 110V	•
Charging leads 230V	•
Fast charge 415V	+
Standard dipper (mm)	1100
Dipper options (mm)	1100/1344
Tie down points	•
LED amber beacon	•
Heavy duty kingpost	•
Exterior mirrors	+
GP & bladed bucket range	+
Mechanical quick hitch	+
Hydraulic quick hitch ind. pipework	+
Thumb ready dipper	+

STANDARD •

OPTIONAL +



## SPECIFICATION

15C-I/16C-I/18Z-I/19C-I/19C-I PC MINI EXCAVATOR

### STATIC DIMENSIONS



Machine model			18Z-I
A	Sprocket idler centres	mm	1218
B	Track length on ground	mm	1220
C	Undercarriage overall length - rubber	mm	1578
	Undercarriage overall length - steel	mm	1578
D	Kingpost clearance	mm	409
E	Tailswing radius	mm	685
F	Overall width of superstructure	mm	996
G	Height over cab	mm	N/A
	Height over canopy	mm	2340
H	Ground clearance	mm	162
I	Track gauge - retracted/extended	mm	750-1110
J	Width over tracks / rubber / steel - retracted	mm	980
	Width over tracks / rubber / steel - extended	mm	1330
K	Transport length	mm	3547
L	Track height	mm	367
M	Counterweight clearance	mm	434





#### ENGINE

Machine model		15C-I, 16C-I, 18Z-I, 19C-I, 19C-I PC
Model		403D-07
Fuel		Diesel
Cooling		Water cooled
Gross power ISO 14396	kW	11.7 @ 2550 rpm
Net power	kW	10.8 @ 2550 rpm
Max. torque ISO 14396	Nm	45.6 @ 2000 rpm
Displacement	cc	762
Gradeability	degrees	35°
Starter motor	kW	1.2
Battery	volt / amps	12V / 65AH
Alternator	amps (aircon)	60

#### UNDERCARRIAGE

Machine model		18Z-I
		Retractable
No. of bottom rollers		3
Track width rubber	mm	230
Track width steel	mm	230
Travel speed – low	kph	2.4
Travel speed – high	kph	4.1
Tractive effort	kN	13.2

#### HYDRAULIC SYSTEM

Machine model		18Z-I
Pump	cc	18
Nominal output @ max rpm	lpm	42
Excavator/track main relief pressure	bar	235
Slew main relief pressure	bar	167
Auxiliary hydraulic pressure (Aux 1)	bar	200
Auxiliary hydraulic pressure (Aux 2)	bar	N/A
Auxiliary hydraulic flow (Aux 1)	lpm	32
Auxiliary hydraulic flow (Aux 2)	lpm	N/A
Hydraulic pump		Piston



## WEIGHTS

Machine model		18Z-1
		Canopy
Operating weight*	kg	1749
FOPS (Falling Object Protective Structure) guard	kg	N/A
Steel tracks	kg	81
Long dozer	kg	9
Mechanical quickhitch	kg	14
Hydraulic quickhitch (without hoses)	kg	N/A
Gravemaster dipper	kg	N/A
Shipping weight**	kg	1655
Ground bearing pressure (rubber tracks)	kg/cm <sup>2</sup>	0.33
Ground bearing pressure (steel tracks)	kg/cm <sup>2</sup>	0.35
Transport weight (operator weight - 75kg)	kg	1674

\*Operator weight to ISO 6016 including cab/canopy, rubber tracks, 950 dipper (15C-1, 16C-1, 19C-1 & 18Z-1), 1100 dipper (19C-1 PC), 300mm bucket, full tanks and a 75kg operator. \*\*Shipping weight to ISO 6016 is mass of the base machine without operator, with fuel level at 10% of tank capacity.

## SERVICE CAPACITIES

Machine model		18Z-1
Fuel tank	ltr	20.5
Engine coolant	ltr	Canopy model: 4.2
Engine oil	ltr	2.5
Hydraulic system	ltr	28
Hydraulic tank	ltr	15

## OPERATOR ENVIRONMENT

Machine model		18Z-1
Cab/canopy height	mm	na / 2347
Cab/canopy height with FOGS guard LEVEL I	mm	na / 2347
Cab/canopy length with FOGS guard LEVEL I	mm	1107
Cab/canopy length	mm	1107
Cab/canopy width	mm	978

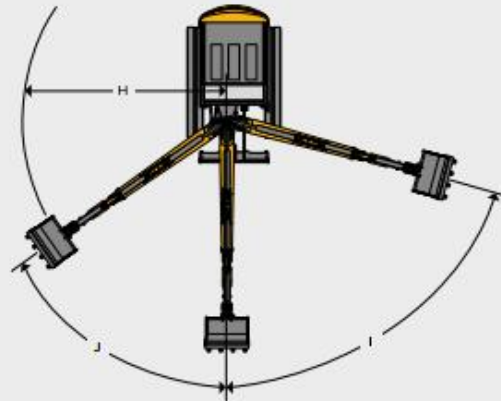
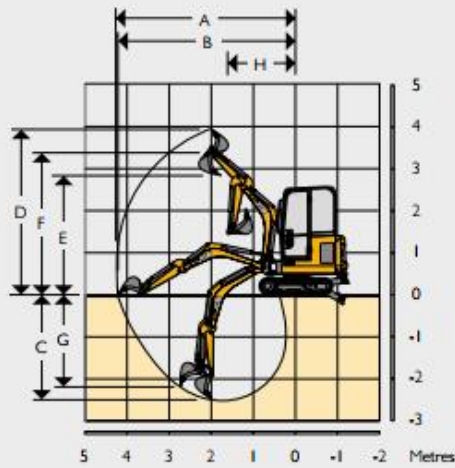
## DOZER

Machine model		18Z-1
Dozer length (STD) centre of boss	mm	787
Max. height above ground	mm	239
Dig depth below ground	mm	225
Approach angle	degrees	25.3
Width (without wings)	mm	980
Width (with wings)	mm	1340
Height	mm	234





## WORKING RANGE



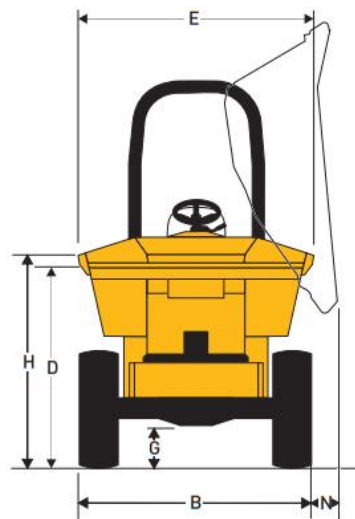
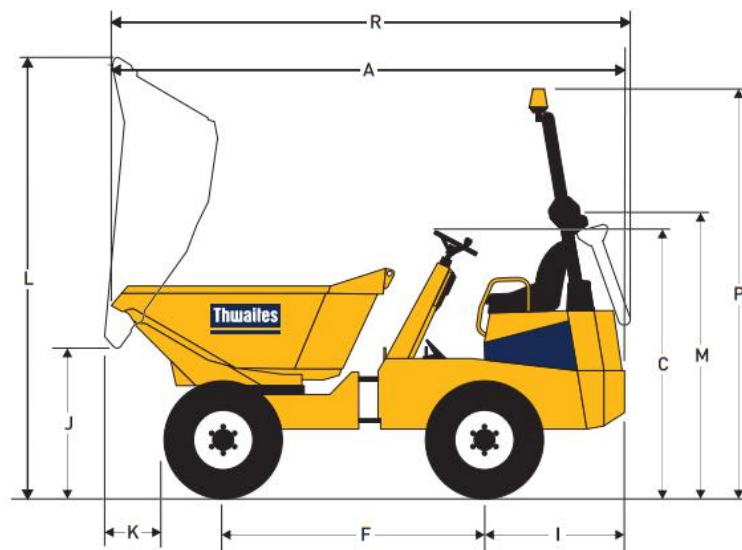
		18Z-1 / 19C-1 / 19C-1 PC (950mm Dipper)
	Boom length	mm
A	Max. digging reach	mm
B	Max. digging reach on ground	mm
C	Max. digging depth – dozer up	mm
	Max. digging depth – dozer down	mm
D	Max. digging height	mm
E	Max. dump/load-over height	mm
F	Max. height to dipper nose pivot pin	mm
G	Max. vertical wallcut depth	mm
H	Min. front swing radius (no offset)	mm
	Min. front swing radius (fully offset)	mm
I	Boom swing left	degrees
J	Boom swing right	degrees
	Bucket rotation	degrees
	Dipper rotation	degrees
	Bucket tearout (power position)	kN
	Dipper tearout	kN
	Slew speed	rpm



► SPECIFICATIONS

## 6 Tonne Power Swivel

MACH2066



Dimensions (mm)	
A	4815
B	2280
C	2230
D	1670
E	2240
F	2480
G	370
H	1850
I	1235
J	1100
K	550
L	3694
M	2230
N	100
P	3300
R	5082



## SPECIFICATIONS

# 6 Tonne Power Swivel

MACH2066

Capacities	Max safe load	6000kg
	Heaped	3150 litres
	Struck	2550 litres
	Water	1650 litres

### Engine

Deutz TCD 3.6 L4 55.4kW/74hp at 2200rpm, water-cooled, four cylinder, charged air cooled turbo, electronic controlled fuel injected diesel engine. Powercore air intake filter and stainless steel exhaust system, including after treatment Diesel Oxidisation Catalyst providing conformity to EU Stage IIIB emission regulations. Peak torque 390Nm at 1300 rpm.

### Noise Levels

Operator's ear 84 LpA, airborne sound level 102 LwA

### Transmission

Torque converter four speed forward and reverse Powershuttle transmission with column mounted directional control lever and heavy duty gear driven transfer box.

Speeds	Forward and Reverse		
	1	5.0km/h	[3.1 mph]
	2	8.0km/h	[5.0 mph]
	3	15.1km/h	[9.3 mph]
	4	27.7 km/h	[17.2 mph]

Tyres	405/70 x 20
	14 ply
	Track grip tread

### Brakes and Axles

Twin circuit totally enclosed multiplate oil immersed discs, mounted on both axles with automatic adjustment for wear. Hand operated parking brake. Heavy duty axles with epicyclic reduction and fully floating half shafts.

### Kinglink Chassis

Front and rear chassis constructed from deep section folded steel plate, with three point Kinglink giving articulation and oscillation for better stability, traction and extra safety on site. Remote greasing point provided for lubrication of top Kinglink articulation pin.

### Skip

Hydraulically operated, 8 mm steel base plate, fully welded, reinforced with box section giving greater strength to minimise skip damage. No material traps. Powerswivel mounted on a ball bearing turntable with powered rotation through 180° by means of twin slewing cylinders, operated by a single dual-axis control lever. Automatic safety lock holds skip in central position when travelling.

### Seating & Controls

Adjustable suspension seat, fitted with high visibility rigid seat belt with adjustable web, accessible from both sides. Audible warning device for handbrake in "on" position, electric horn, large pedal pads, ignition key, park brake and skip controls ready to hand. Super bright LED warning lights visible from the drivers position for all critical functions.

### Service Access

Lockable three sided cover opens to provide easy access from ground level to engine service points, all located on the same side. Rear chassis panel can be hinged back on retainers. An additional service access door incorporates the battery. Moulded plastic diesel tank and steel hydraulic tank are positioned low in chassis side members, permitting access to the filler caps from ground level.

### Electrics

Engine control unit with shutdown monitoring. Electronic equipment function includes diagnostic port and tri-function hour meter/ fault code reader/ battery volt meter. Fuse & relay panel housed in easy to access position, with all wiring contained in solid sealed conduit and all electrical components water resistant to IP67 rating.

### Steering and Hydraulics

Single gear pump providing hydraulic functions includes priority power steering. Filter mounted on top of the tank accessible from ground level. Hydraulic test point fitted as standard.

Tank Capacities	Fuel	72 litres
	Hydraulic	50 litres

Shipping Cube	25.8 m <sup>3</sup> [with ROPS]
---------------	---------------------------------

Unladen Weight	4420kg
----------------	--------

Clearance Diameter	12m
--------------------	-----

Standard Equipment	Towing bracket
	Folding ROPS frame
	Rotary beacon
	Low fuel level warning
	Water in fuel warning
	High visibility rigid seat belt
	Reverse alarm
	Low brake fluid warning
	Handbrake test switch

Distributor

# Thwaites

Thwaites Ltd. Leamington Spa, Warwickshire CV32 7NQ, England  
Tel +44 (0)1926 422471 Fax +44 (0)1926 337155  
www.thwaitesdumpers.co.uk



We reserve the right to change all specifications without prior notice.  
Printed in England 02/2015





**WACKER  
NEUSON**  
*all it takes!*

## 4001 Wheel Dumpers



The four-wheel pro – 4001.

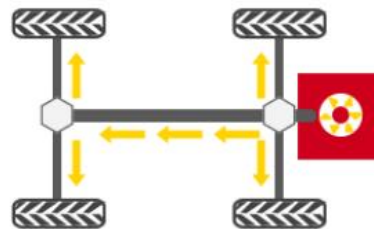
Shifts up to 4,000 kg payload quickly and efficiently and then dumps the load with the spot on precision of the standard swivel-tipping skip. Guaranteed to get things going on the building site.

- Low maintenance hydrostatic four-wheel drive;
- swivel tipping skip (standard), large-volume, robust and hard-wearing skip design; standard skip capacity of up to 2,550 l (heaped).
- With high ground clearance and a top speed of 21 km/h transport jobs get done fast.
- Maximum payload 4,000 kg
- More of a speedster: the 4001s Speed Version gets up to 25 km/h!



### Hydrostatic all-wheel drive

- total focus on the job, no busy shifting of gears
- one central hydraulic engine drives both axles via a cardan shaft
- hydrostatic braking effect as soon as the foot is taken off the accelerator pedal
- low-wear drive for reduced service and maintenance costs
- controlled delay for regulated switching, thus no abrupt change of drive
- accelerate from 0 to maximum speed of 28km/h without traction loss





**WACKER  
NEUSON**  
*all it takes!*

#### Technical specifications

##### Operating data

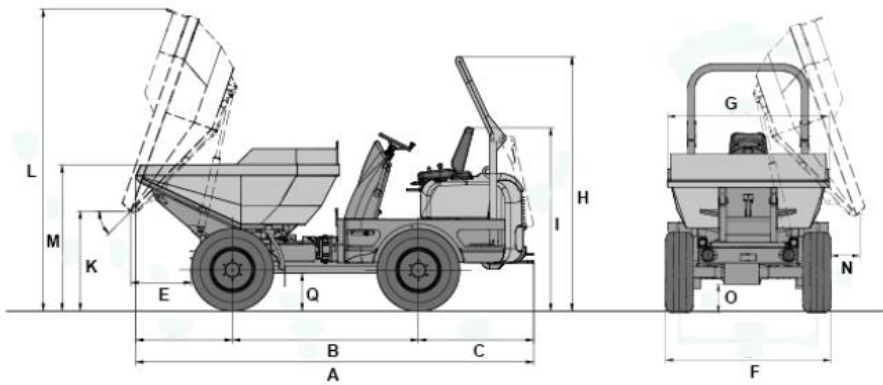
Payload	4,000 kg
Shipping weight	2,730 kg
Skip capacity level	1,650 l
Skip capacity heaped	2,130 l
Skip capacity water level	1,030 l
<b>Engine / Motor</b>	
Engine / Motor manufacturer	Yanmar
Engine / Motor type	4TNV88
Engine / Motor	Diesel
Engine performance acc. to ISO 3046/1	34.1 kW
Displacement	2,189 cm <sup>3</sup>
Engine RPM	2800 rpm
Travel speed	21 km/h
Articulation angle	37 °
Pendulum angle	15 °
Turning radius	3,730 mm
Gradeability	50 %
L x W x H	4200 x 1795 x 2700 mm
Flow rate	46.5 l/min
Operating pressure	175 bar
Tank capacity	38.9 l
Sound level (L <sub>WA</sub> )	101.4 dB(A)



Wacker Neuson 4001



### Dimensions



A	Overall length	4,200 mm
B	Wheelbase	1,960 mm
C	Rear overhang	1,215 mm
E	Dumping distance	600 mm
F	Width vehicle	1,795 mm
G	Skip width	1,740 mm
H	Height ROPS	2,700 mm
I	Height ROPS tipped	1,930 mm
K	Dump height max.	1,030 mm
L	Skip height tipped	3,200 mm





**WACKER  
NEUSON**  
*all it takes!*

M	Skip height	1,500 mm
N	Dumping distance seitlich	270 mm
O	Ground clearance	300 mm
--	Dump angle	46 °
Q	Distance	390 mm

**Please note**

that product availability can vary from country to country. It is possible that information / products may not be available in your country. More detailed information on engine power can be found in the operator's manual; the stated power may vary due to specific operating conditions. Subject to alterations and errors excepted. Applicable also to illustrations.  
Copyright © 2017 Wacker Neuson SE.





## Wacker Neuson 3001

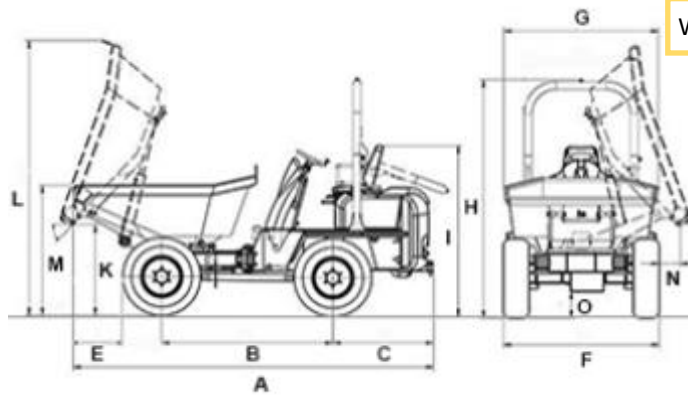


### Technical specifications

	Swivel tip skip
<b>Operating data</b>	
Payload kg	3,000
Shipping weight kg	2,550
Skip capacity level I	1,300
Skip capacity heaped I	1,750
Skip capacity water level I	900
<b>Engine / Motor</b>	
Engine / Motor manufacturer	Yanmar
Engine / Motor type	3TNV88
Engine / Motor	Diesel
Engine performance acc. to ISO 3046/1 kW	24.4
Displacement cm <sup>3</sup>	1,642
Engine RPM rpm	2800
Travel speed km/h	22
Articulation angle °	37
Pendulum angle °	15
Turning radius mm	3,650
Gradeability %	50
Tires	11.50/80-15.3
L x W x H mm	4140 x 1785 x 2670
Steering pump	axial piston pump
Flow rate l/min	126
Operating pressure bar	360
Duty pump	gear pump
Flow rate l/min	45
Operating pressure bar	220
Sound level (LwA) dB(A)	101



# Wacker Neuson 3001



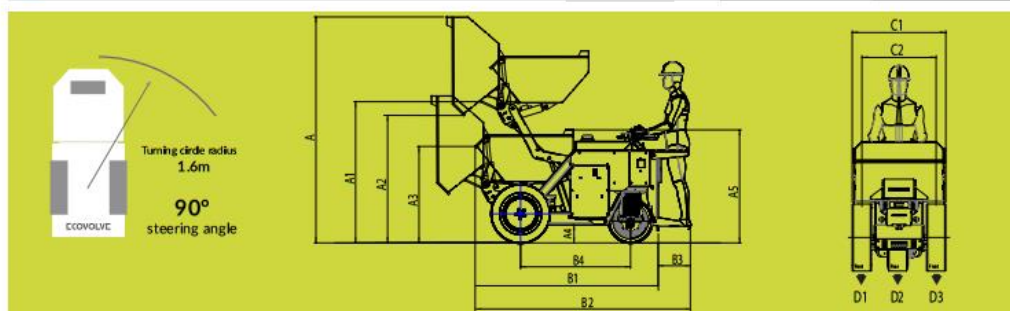
Swivel tip skip

A	Overall length	4,140 mm
A	Overall length cabin	4,140 mm
B	Wheelbase	1,960 mm
C	Rear overhang	1,160 mm
E	Dumping distance	600 mm
F	Width	1,785 mm
G	Skip width	1,775 mm
H	Height	2,670 mm
I	Height ROPS folded down	1,870 mm
J	Height cabin	2,610 mm
K	Dump height max.	1,020 mm
L	Skip height tipped	3,125 mm
M	Skip height not tipped	1,475 mm
N	Dumping distance lateral	245 mm
O	Ground clearance	280 mm
--	Dump angle	46 °





	0	ED1000
<b>Capacity</b>	Max safe load (Kg)	1000
	Unladen weight (Kg)	1300
	Skip - Leveled (Ltr)	435
	- Heaped (Ltr)	600
	- Water level (Ltr)	315
<b>Drive</b>	Drive type	1 wheel drive
	Steering	1 wheel steer
	Speed (Km/h)	0-8
	Steering angle	90°
	Grade ability	15°
<b>Transmission</b>	Proportional Steering	Drive Electric
	Tires - Front (2no. Super elastic)	27x8,5x15
	- Rear (1no. Super elastic)	21x8x9
	Brakes	Dynamic electric brake
		Negative parking brake
<b>Hydraulic system</b>	Gear pump - Flow rate (Ltr/Min)	6.5
	- Oper. pressure (Bar)	130
	Pump motor (KW)	2.2
	Hydraulic tank capacity (Ltr)	2.8
<b>Electric system</b>	Voltage (V)	24
	Battery (Ah)	400
	Integrated Charging - Input (V AC)	100-240
	- Output (V DC)	24
	Recharge (Hrs)	8
<b>Drive motor</b>	Type	Induction motor
	Output	5KW/7HP
	Emission	Zero
<b>Noise</b>	Driving (Db)	65
	Buzzer [adjustable] (Db)	60-80

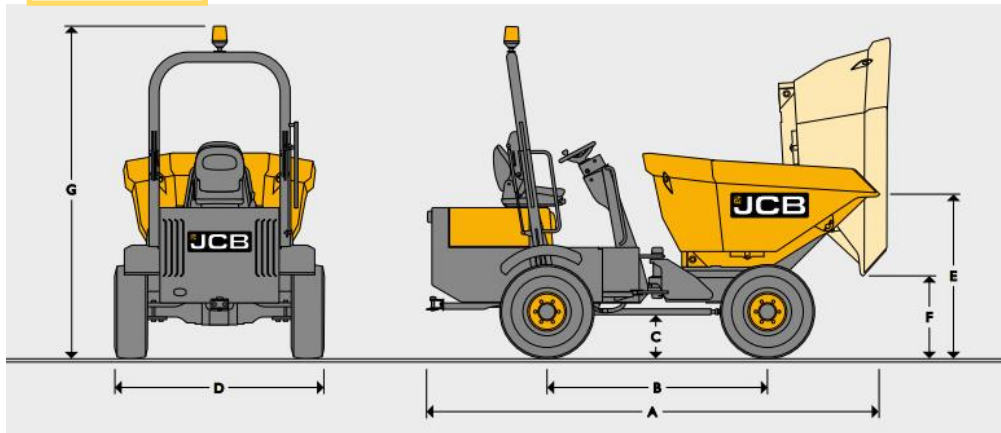


													Unladen		Laden	
[mm]	A	A1	A2	A3	A4	A5	B1	B2	B3	B4	C1	C2	D1/D3	D2	D1/D3	D2
ED1000	2610	1630	1470	1120	210	1310	2200	2565	330	1270	965	762	310 kg	680 kg	785 kg	730 kg

Ground Pressure



# JCB 1T



			ITHT
A	Overall length	mm	2980
B	Wheel base	mm	1440
C	Minimum ground clearance	mm	241
D	Width	mm	998* / 1120
E	Height to front lip of skip (untipped)	mm	1167
F	Height to front lip of skip (tipped)	mm	1620 (raised)
	Turning radius to outside of skip	mm	2295
	Steering angle		+/- 45°
	Oscillation		+/- 14°
G	Height to top of ROPS (raised with beacon)	mm	2832

\*When fitted with narrow tyres



## JCB 1T

ENGINE		
Type		ITHT
Engine model		Kubota D905
Capacity	cc	898
Aspiration		Naturally Aspirated
Cylinders		3
Max gross power to SAE J1995/ISO 14396	kW (hp)	15.5 (20.8)
Max torque	Nm	56
Emissions compliance		EU Stage 3A

CAPACITIES		
Payload	kg	1000
Unladen weight	kg	1350
Tipping type		Front tip - High tip
Skip capacity (water)	litres	320
Skip capacity (struck)	litres	450
Skip capacity (heaped)	litres	540
*When fitted with narrow tyres		



## JCB 1T

### TRANSMISSION

	ITHT
Type (standard)	Hydrostatic pump to 4 hydraulic wheel motors
Type (option)	-
Tyre size	255 / 75 x 15.2 x 8 ply (option 7.0 x 12 narrow tyre)
Drive	Hydrostatic 1/1
Max travel speed (unladen)	mph (kph)
Gradeability (maximum slope gradient)	7 (11) 20% (1 in 5)

### ELECTRICAL SYSTEM

	ITHT
System voltage	Volt
Alternator output	Amp hour
Battery capacity	Amp hour

### SERVICE FILL CAPACITIES

	ITHT
Hydraulic tank	litres
Fuel tank	litres

### HYDRAULICS

	ITHT
Pump 1 max. flow	l/min
Pump 1 max. pressure	bar
Steering system	

### STEERING

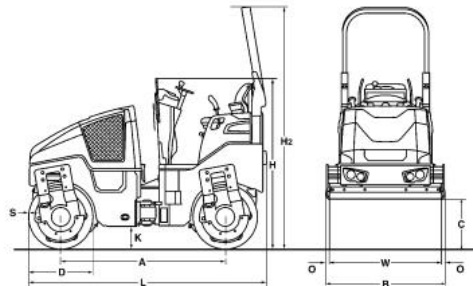
	ITHT
Working brake	Hydrostatic dynamic braking on rear wheel motors
Parking brake	Hydrostatic dynamic braking on rear wheel motors

### ENVIRONMENTAL

	ITHT
Noise emission (to ISO 4871) - Sound pressure (LpAd)	83db
Sound power level (LWAd)	101db
Noise compliance	
Vibration – hand arm (as defined in EN474-1 all operations)	
Vibration – whole body (as defined in ISO/TR 25398-Work Cycle)	



BOMAG BW120 AD-5



Dimensions in mm

	A	B	C	D	H	H2	K	L	O	S	W
BW 120 AD-5	1752	1272	523	700	1808	2568	254	2529	36	13	1200

Shipping dimensions in m3  
 BW 120 AD-5

without ROPS  
 5,816

with ROPS  
 8,261

Machine type	Compaction output (m3/h) at recommended soil layer thicknesses		
	Gravel, sand	Mixed soil	Silt, clay
BW 120 AD-5	85-170	65-125	43-85

Machine type	Compaction output (t/h) at different asphalt layer thicknesses		
	2-4 cm	6-8 cm	10-12 cm
BW 120 AD-5	20-45	40-70	70-120





## BOMAG BW120 AD-5

### Technical Data

### BOMAG BW 120 AD-5

#### Weights

Operating weight w. ROPS CECE .....	kg	2.700
Average static linear load CECE .....	kg/cm	11,3
Grossweight .....	kg	3.150

#### Dimensions

Working width .....	mm	1.200
Track radius, inner .....	mm	2.450

#### Driving Characteristics

Speed .....	km/h	0- 9,0
Working speed with vibration .....	km/h	0- 5,0
Max. gradeability without/with vibr. ....	%	40/30

#### Drive

Engine manufacturer .....		Deutz
Type .....		D 2.2
Emission stage .....		Stage V / TIER4f
Cooling .....		water
Number of cylinders .....		3
Performance ISO 14396 .....	kW	18,4
Performance SAE J 1995 .....	hp	25,0
Speed .....	min-1	2.300
Electric equipment .....	V	12
Driven drum .....		front + rear

#### Brakes

Service brake .....		hydraul.
Parking brake .....		hydraulic.

#### Steering

Steering system .....		oscil.artic.
Steering method .....		hydraul.
Steering / oscillating angle +/- .....	grad	32/10
Crab walk .....	mm	0- 50

#### Exciter system

Vibrating drum .....		front + rear
Drive system .....		hydraul.
Frequency .....	Hz	67/56
Amplitude .....	mm	0,50
Centrifugal force .....	kN	41/29

#### Sprinkler System

Type of sprinkling .....		pressure
--------------------------	--	----------

#### Capacities

Fuel .....	l	35,0
Water .....	l	205,0

Technical modifications reserved. Machines may be shown with options.



# BROKK 160



## Cutting-edge demolition unleashed

**DON'T LET THE SIZE FOOL YOU.** The Brokk 160 is a giant leap forward when it comes to small size and impressive strength. This lightweight, remote-controlled demolition machine and its power-packed electric motor, hits frighteningly hard (over 406 joules at the tip). As with our complete line of remote demolition machines, safety is the first design priority. The Brokk 160's state-of-the-art digital remote control takes the

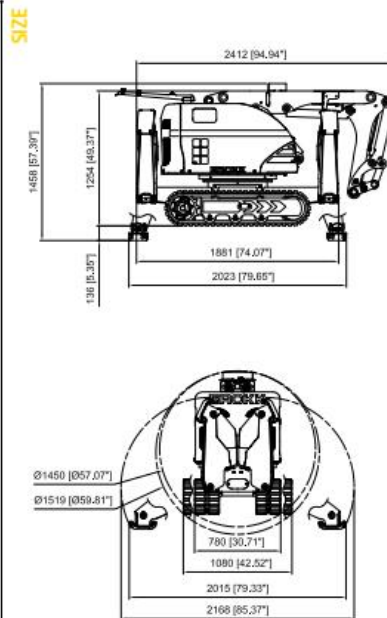
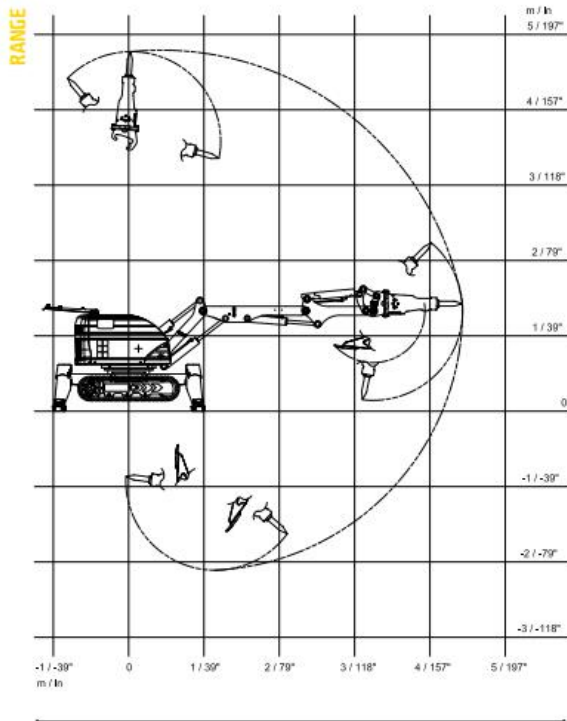
danger out of demolition by allowing you to control the unit from a safe distance with incredible accuracy.

With the efficiency of the 160, you'll work smarter not harder. Welcome to a new generation of demolition machines with the strength and versatility to take your business to the next level.

### APPLICATIONS

Perfect for safe and effective medium to heavy demolition in the construction, cement, mining, tunneling, metal processing and nuclear industries.





**TECHNICAL DATA**

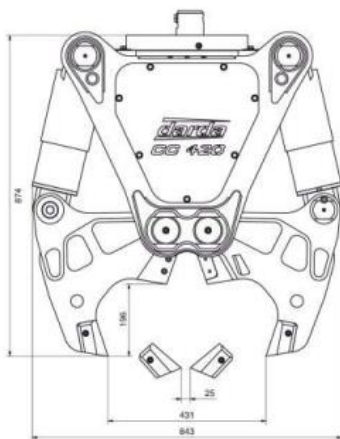
Hydraulic breaker in illustrations	SB 202
Load and stability diagram can be ordered from Brokk AB	
<b>Performance</b>	
Slewing speed	10 sec/360°
Transport speed, max.	2.1 km/h; 0.6 m/s; 1.3 mph
Incline angle, max.	30°
<b>Hydraulic system</b>	
Hydraulic system capacity	80 l; 21.1 US gal
Pump type	Variable load-sensing piston pump
System pressure, standard	17.5 MPa; 2,538 psi
System pressure, max****	25.0 MPa; 3,626 psi
Oil flow max*	50Hz 62 l/min; 16.4 US gal/min
	60Hz 74 l/min; 19.7 US gal/min
<b>Electric motor</b>	
Type	ABB
Output**	18.5 kW
Current**	38 A
Starting device	Soft start/Direct start
<b>Control system</b>	
Control type	Portable control box
Signal code	Digital
Transfer	Cable/Radio
<b>Weight</b>	
Weight of machine	1,600 kg; 3,527 lbs
Weight of machine incl. counterweight***	1,900 kg; 4,189 lbs
<b>Machine noise level</b>	
Sound power level Lwa, measured according to directive 2000/14/EC	85.8 dB(A)

\*Max pump flow and max system pressure cannot be delivered at the same time as the engine will overload  
 \*\*Valid for 400V/50Hz  
 \*\*\*Option for long-arm, extra heavy tools, etc  
 \*\*\*\*Option for some special attachments



# CONCRETE CRUSHER CC 420

## Maximum crushing force in a lightweight attachment!



### Specifications CC 420

Measurements		
Total length <sup>1,2</sup>	874 mm	34,5 inches
Total width <sup>1</sup>	843 mm	33 inches
Total height	330 mm	13 inches
Maximum distance between crusher tips	420 mm	16,5 inches
Weights		
Total weight without mounting plate, approx.	240 kg	529 lbs.
Recommended weight of carrier	2,5 - 4,5 t	5511 - 9921 lbs.
Hydraulics		
Minimum pressure	17,5 MPa (175 bar)	2538 psi
Maximum pressure	27 MPa (270 bar)	3900 psi
Working pressure	50 MPa (500 bar)	7252 psi
Oil flow max.	100 l/min	26,4 US gal/min
Performance (at input pressure min 15,5 MPa (155 bar))		
Maximum crushing force <sup>1</sup>	382 kN (38,2 t)	85877 lbf
Maximum cutting force <sup>1</sup>	1215 kN (124 t)	278762 lbf
Cutting capacity max.	D = 28 mm	D = 1,1 inches
Time to close <sup>1</sup>	ca. 2,3 s	ca. 2,3 s
Time to open <sup>1</sup>	ca. 1,8 s	ca. 1,8 s

<sup>1</sup> When completely extended. <sup>2</sup> Without mounting plate. <sup>3</sup> With an oil flow of approx. 70 l/min.

<sup>4</sup> Force at the crusher tips when open. <sup>5</sup> Force at the cutter blades.

Mounting plates for different carriers on request!



## TECHNICAL DESCRIPTION TD-30

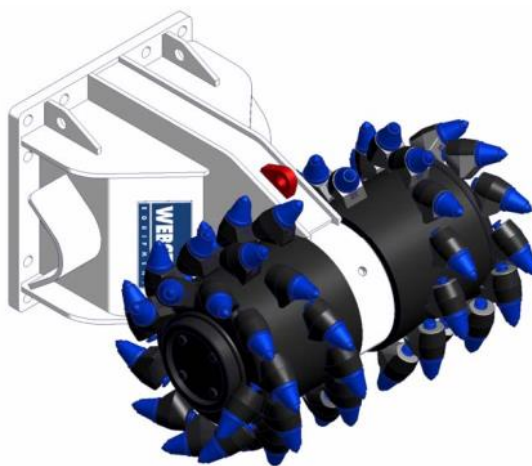
The Rockwheel TD-30 Hydraulic Cutting Unit can be supplied with either scaling/grinding cutting drums or rock cutting drums. For advice re different diameters, widths and/ or picks contact Webster Equipment Ltd Technical Department.



### TD-30 Specification

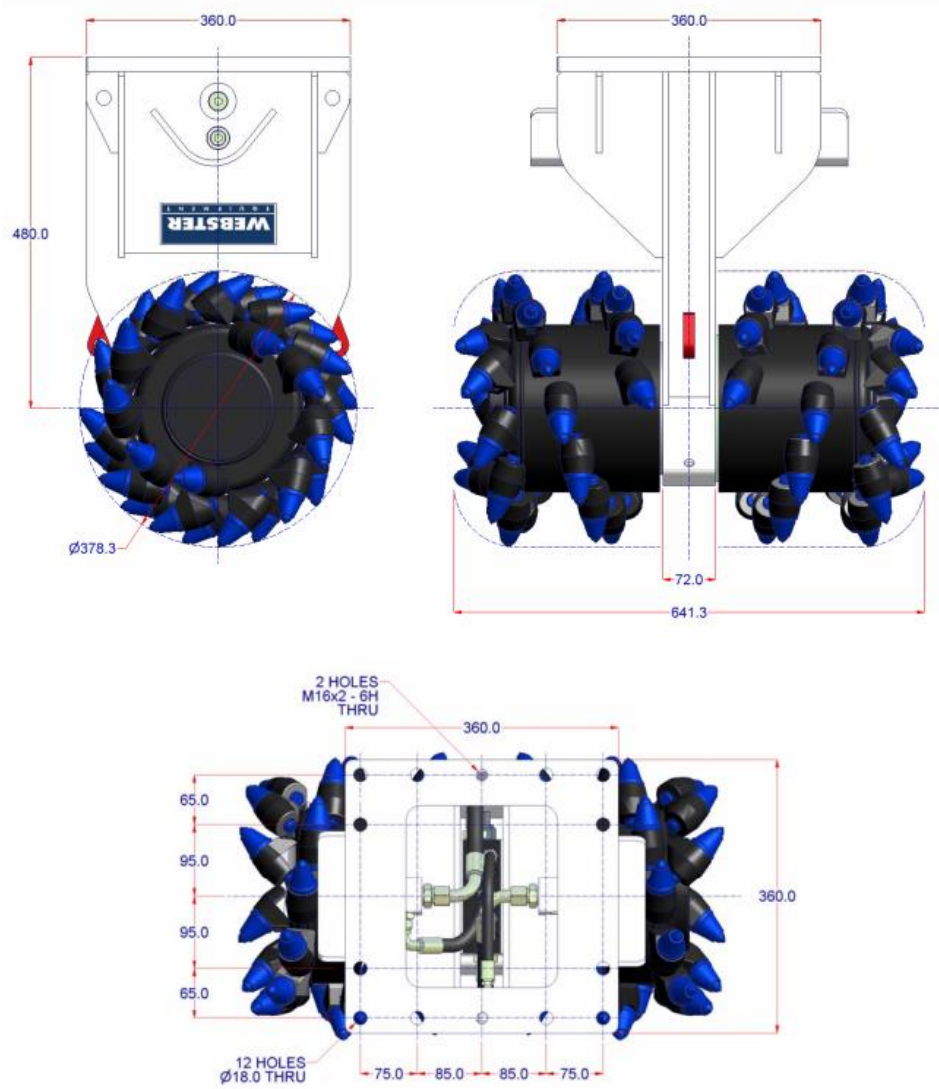
Maximum Input Power	- 22 kW	- 29.5 hp
Maximum Flow	- 65.0 lpm	- 14.5 UK gpm
Recommended Flow	- 40.0 lpm	- 8.8 UK gpm
Maximum Pressure	- 400 bar	- 5,801 psi
Output Shaft Torque	- 1,875 Nm @ 300 bar	- 1,383 lbf ft @ 4,351 psi
Pick Force	- 9.9 kN @ 300 bar	- 2,229 lbf @ 4,351 psi
Output Shaft Speed	- 100.0 rpm @ 40 lpm	- 100.0 rpm @ 8.8 UK gpm
Pick Speed	- 1.98 m/s @ 40 lpm	- 460.5 ft/min @ 8.8 UK gpm
Unit Weight	- 215 kg	- 474 lb
Excavator Range	- 2.5 – 6.0 tonne	- 2.0 – 6.0 tonne
No of Picks (Rock Drums)	- 56 (19.0 mm Shank)	- 56 (0.76" Shank)

If oil specification is below 46 centistokes at 40°C (ISO HV46) the performance must be down rated. Please consult Webster Equipment Technical Department for further information.





To simplify installation the Rockwheel TD-30 mounting flange is designed to suit existing hydraulic breakers.



# BROKK 110

NEW 2016!



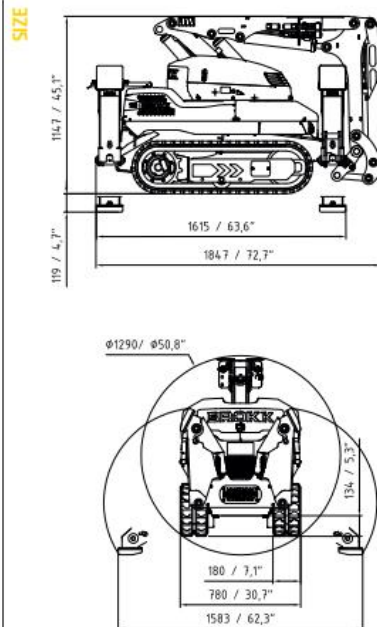
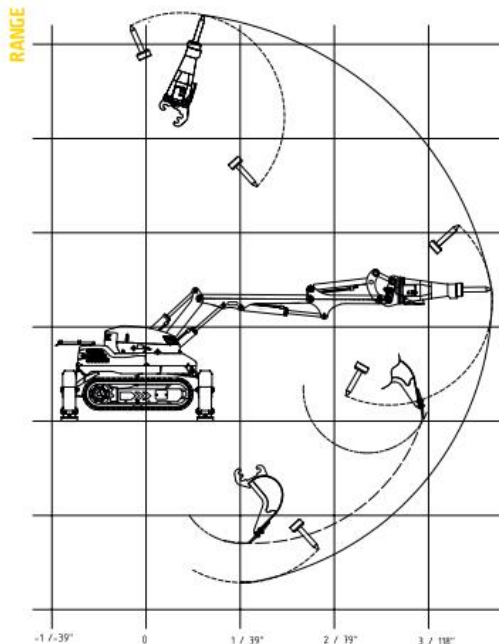
## Stronger, smarter, tougher

**THE BROKK 110** is the new generation of demolition robots. With 15% more power than the Brokk 100 (and a whopping 50% more power than the Brokk 90), the new Brokk SmartPower™ electrical system and a reinforced design, it's built to face almost anything. Just like its predecessor it is extraordinarily versatile in tight spaces, as it keeps the same industry leading compact size. In spite of its reach and power, it folds up into a surprisingly compact package that can climb stairs, fit in an elevator and be carried on a small truck or trailer. It's the perfect solution in a wide variety of residential, commercial and industrial environments. All in all: a demolition robot that's stronger, smarter and tougher.

- Most compact and powerful machine of its size
- Brokk SmartPower™, a new intelligent and hardened electrical system
- Operates on both 16 and 32 amp
- Real 360 degrees work radius
- Unbeatable cooling capacity
- Fully covered and protected components







**TECHNICAL DATA**

Hydraulic breaker in illustrations	SB 152
Load and stability diagram can be ordered from Brokk AB	
<b>Performance</b>	
Slewing speed	10 sec/360°
Transport speed, max.	2,5 km/h; 0,7 m/s;
Incline angle, max.	30°
<b>Hydraulic system</b>	
Hydraulic system capacity	45 l; 11.8 US gal
Pump type	Variable load-sensing piston pump
System pressure	18 MPa; 2 611 psi
Pump flow max 50 Hz/60 Hz	54 l/min; 14,3 US gal/min
<b>Electric motor</b>	
Type	ABB
Motor rating*	15 kW
Rated current*	31 A
Rated current reduced power*	16 A
Power consumption*	0-16,5 kW
Starting device	Soft start/Direct start
<b>Control system</b>	
Control type	Portable control box
Signal code	Digital
Transfer	Cabel/Radio
<b>Weight</b>	
Weight of basic machine excl attachment & extra equipment	990 kg; 2 183 lbs
Recommended attachment weight	160 kg; 352 lbs
<b>Noise level</b>	
Sound power level Lwa, measured according to directive 2000/14/EC	91 dB(A)
* Valid for 400V/50Hz	
** Hydraulic pressure can be increased depending on the attachment	

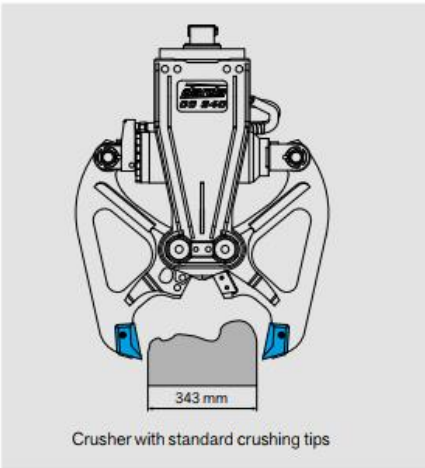
**ACCESSORIES/OPTIONS**

<b>Arm System</b>	Impact and heat protection for cylinder C2 and C3
<b>Under carriage</b>	Rubber caterpillar tracks Steel caterpillar tracks
<b>Heat resistance</b>	Heat resistant hoses for hydraulic breaker Forced draft cooling of machine Forced draft cooling of breaker
<b>Other options</b>	Air flushing through breaker to protect from dust Water spray through breaker to bind dust Brokk cover Extra hydraulic function Drainage hose CAN cable connection for tools



# Concrete Crusher CC340

Flyweight champion



## Specifications | Concrete Crusher CC340

Dimensions and weight		
Length x Width x Height <sup>1</sup>	877 x 715 x 334 mm	34 x 28 x 13 in
Jaw opening	343 mm	14 in
Total weight <sup>1</sup>	150 kg	331 lb
Carriers		
Recommended carrier weight, max. <sup>2</sup>	1.5 - 2.7 t	3307 - 5952 lb
Recommended Brokk machines	Brokk 110 / 120D	
Hydraulic connection		
Connection pressure, min.	16.5 MPa (165 bar)	2393 psi
Connection pressure, max.	25 MPa (250 bar)	3626 psi
Operating pressure	47 MPa (470 bar)	6817 psi
Oil flow, max.	100 l/min	27 gal/min
Power output		
Crushing force, max.	360 kN (36.7 t)	80931 lbf
Cutting force, max.	950 kN (97 t)	213500 lbf
Cutting capacity, max.	1x Ø 30 mm	1 1/4 in
Ordering information		
Article no. <sup>3</sup>	9033 0340 80	

<sup>1</sup> Without support plate

<sup>2</sup> Depending on the load capacity table of the carrier manufacturer

<sup>3</sup> Without attachment



# / BROKK 70

The Brokk 70 is the perfect solution for safe and efficient demolition in confined spaces. Compared to its predecessor, the Brokk 60, the Brokk 70 has a stunning 100% more demolition capacity. Its combination of power, small size, and light weight allow for work in places where mechanized demolition has previously been impossible. Equipped with SmartPower™ and a smooth hydraulic system, the Brokk 70 features enormous power in a miniature size. With the Brokk 70, there is no need to continue using harmful hand tools.

- Weighs less than 560 kg
- 9.8 kW Brokk SmartPower™ electrical system
- Powered with only 16 A electricity fuse
- Extremely compact - gets through the narrowest doorways



Hydraulic breaker in images: BHB 105. Drum cutter in image: BDC 40.  
Load and stability diagram available on request



## TECHNICAL DATA

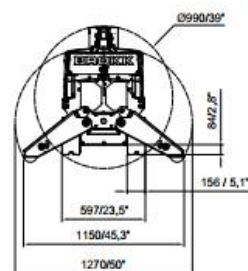
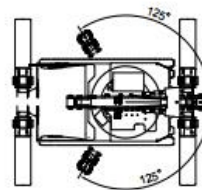
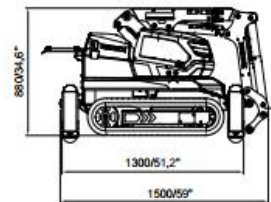
Slewing speed	6,5 sec/245°
Transport speed, max.	2.7 km/h; 1.7 mph
Climbing inclination, max.	30°
Hydraulic system capacity	27 t; 7.1 US gal
Pump type	Variable load-sensing
System pressure	17 MPa; 2466 psi
Pump flow 50Hz och 60Hz	27 l/min; 7 US gal/min
Power technology	SmartPower™
Electric motor type	ABB
Power*	9.8 kW
Recommended fuse size*	16 A
Starting device	Direct start
Control type	SmartRemote™, portable
Signal code	Digital
Transfer	Professional radio/Cable
Range, radio	Up to 300 m
Machine weight**	560 kg; 1235 lbs
Recommended attachment weight	105 kg; 231 lbs
Sound power level L <sub>WA</sub> ***	90 dB(A)

\*Valid for 400 V/50 Hz and 440 V/60 Hz

\*\*Excluding attachment and extra equipment

\*\*\*Measured according to directive 2000/14/EC

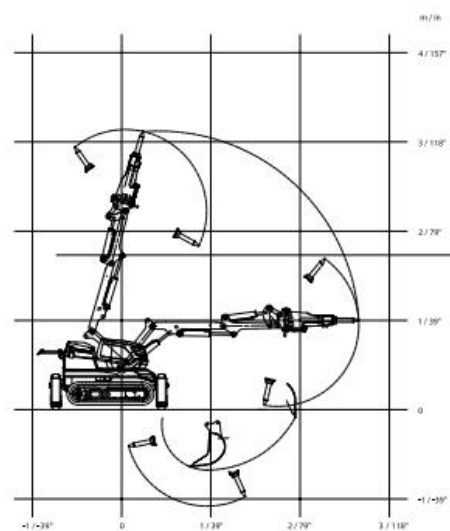
## SIZE



## OPTIONS

- Extra cylinder protection
- Rubber caterpillar tracks
- Forced draft cooling for machine
- Forced draft cooling for breaker
- Steel pads
- Atomized water mist **NEW!**
- Water spray for breaker
- Extra hydraulic function
- Lifting eyes (regular lifting points are standard)
- Motion warning

## RANGE





## BREAKERS

Brokk's hydraulic breakers are the most versatile and effective attachments for your Brokk robot. The BHB series is optimized and perfectly balanced to work with Brokk demolition robots.

ATTACHMENTS OVERVIEW

### TECHNICAL SPECIFICATIONS

	HITTING POWER*	BLOWS/MIN	WEIGHT	MADE FOR
BHB 105	159 J/Nm	750 – 2300	100 kg/220 lbs	Brokk 70, 110, 120D





HTC - the Innovators, not the imitators!

# HTC

## Radio controlled grinder

### HTC 650 RX



### The small radio controlled grinding machine that streamlines and simplifies grinding.

HTC has now created a smaller radio controlled grinding machine based on the same reliable technique as the hard worker HTC 950 RX. A machine loaded with features that take grinding to a new level. A better turning radius and more effective grinding time are a couple strong advantages with this machine which is suitable for both small and large surfaces.

- Radio control
- Raised handle gives a better turning radius  
- easier in narrow spaces
- Patented well-known drive system with four grinding discs - perfectly balances the machine
- Mist Cooler System
- Ergonomically designed
- Integrated system of weights for adjusting grinding pressure
- The further developed grinding heads give lower maintenance costs and longer life
- Easily fit through regular doors  
(total machine width = 71 cm)



# Radio controlled grinder

## HTC 650 RX



### Unique and flexible radio control

The radio control makes the machine very simple and effective to operate. The radio control also minimizes operator injuries from stress and vibrations and the supervision and service surrounding the grinding becomes easier.



### Mist Cooler System (incl. as standard)

A small detail that makes a huge difference! Our unique Mist Cooler System cools the tools which lead to increased stripping with up to 100% and a much more effective grinding.



### New lock mechanism

The lock mechanism for the handle has now been updated to a more ergonomic design, manufactured in light-alloy metal.

### Technical Data - HTC 650 RX

	HTC 650 RX	
Item no.	112947	
Motor	kW	11
Ampere	A	25
Voltage:	V	3 x 400 (EU)
Frequency	Hz	50
Weight	kg	455
Grinding diameter	mm	650
Grinding pressure	kg	183-202-272
Rpm		300-1400
Water tank	L	26
Grinding discs	mm	4 x 230
Diode lamps	V	24
Control current	V	24
Frequency	MHz	433,100 - 434,750
Radio control		
Rec. Vac System	HTC 10 iAD HTC 15 iAD	



### HTC Sweden AB

Postal address: Box 69, 614 22 Söderköping, Sweden  
Visitors/delivery address: Klevvägen 7  
614 92 Söderköping  
Phone: +46 (0)121-294 00. Fax: +46 (0) 121-152 12  
E-mail: [info@htc-sweden.com](mailto:info@htc-sweden.com)





# HTC

## Professional Floor Systems

### Product sheet

## HTC 420 VS

- HTC 420 VS - The multi functional machine



HTC 420 is the machine for those who need a small, durable machine with a large capacity.

Flooring contractors set high demands on effective, flexible machines and HTC 420 lives up to the expectations. The machine handles everything from floor preparation and grinding to fine polishing and does an excellent job. In addition, HTC 420 can remove tough coatings like adhesive, screed and paint.

- A light and handy all-round machine for concrete, natural stone, terrazzo and wood
- Frequency-controlled
- Ergonomically designed
- The machine can be used for coarse grinding, preparation, maintenance and polishing
- Collapsible for easier transport
- Adapted for the EZchange™ system



# HTC 420 VS



- A light and handy all-round machine for concrete, natural stone, terrazzo and wood
- Variable speed
- Ergonomically designed
- The machine can be used for coarse grinding, preparation, maintenance and polishing
- Collapsible in two parts for easier transport
- Water tank

- 94 kg
- 65 kg
- 420 mm
- 180 mm (3 qty)
- 1 x 100 V / 16 A / 25 A  
1 x 200 V / 16 A / 25 A  
3 x 400 V / 16 A / 25 A
- 2,2 kW
- 430–1140 rpm

Model	Item no
1x200 V	112131
3x400 V	112210
1x100 V	112132

Read more about voltages at page 40.



**EZchange™**  
EASY TO CHANGE DISCS

- Up to 81 m<sup>2</sup> per hour  
1 step concrete grinding.
- Up to 34 m<sup>2</sup> per hour  
floor preparation.

**81 m<sup>2</sup>**  
**34 m<sup>2</sup>**  
**81 m<sup>2</sup>**  
Approximately.  
Per Hour. See p. 40



# HTC 270 EG



- Maximum head height of only 100 mm to grind and polish under shelves
- Rotating floating shroud with fully adjustable wheels allows for grinding and polishing up to the wall or away
- Multi-axis adjustable grinding head for more controlled and ergonomic grinding of uneven or sloped edges
- Variable speed machine for complete control
- EZchange™ system - Use same tools as any HTC machine

- 103 kg
- 36 kg
- 270 mm
- 1x200 V / 16 A  
3x400 V / 16 A  
3x480 V / 16 A
- 2,2 kW
- 460–1220 rpm

Model	Item no.
1x200 V	501054
3x400 V	113418
3x480 V	113325

Read more about voltages at page 40.



# HTC Greyline™ Series



HTC Greyline™ is an equipment line focused on three main applications:

**Floor Preparation / Coatings Removal, Concrete Grinding & Leveling & Wood Refinishing.**

The focus is to simplify the process, making it extremely easy to accomplish the end goal. It is also a good way to keep your premium Blackline machines on the big jobs while your HTC Greyline™ fleet tackles the smaller jobs that are normally sub-contracted out. Keep those customers & increase your profit margin by not sub-contracting out those simple flooring jobs.

## FLOOR PREPARATION CONCRETE GRINDING WOOD REFINISHING



Name	HTC 450
Article Number	967932703
Length	1440 mm
Width	480 mm
Height	990 mm
Weight	109 mm
Motor output	1,5 kW
Power consumption	20 A
Voltage	1 x 110 V
Frequency	50 Hz
Grinding pressure	59 kg
Revolution speed	470 rpm
Grinding discs	3 x 180 mm
Grinding width	450 mm
Grinding motors	1
Recommended Dust Extraction Systems	HTC D20 HTC D30 HTC PS30



## HTC GREYLINE™ 450 / 450 HD

 450 mm	 1,5 kW 2,2 kW (HD)
 95 kg	 1 x 110 V 1 x 230 V

Model	Item no.
HTC GL 450 1x230 V 50 Hz	113128
HTC GL 450 1x110 V 50 Hz	113127
HTC GL 450 1x110 V 60 Hz	113144
HTC GL 450 HD 1x230 V 50 Hz	113572





### Technical data

		HTC 80 iD II
Art.no		113753 (EU)
Motor	kW	7,5
Ampere	A	16
Voltage	V	3 x 400
Frequency	Hz	50
Weight	kg	272
Max. theoretical airflow	m³/h	700
Max. actual airflow	m³/h	595
Max vacuum	mbar	380
Main filter area	m²	3,5
HEPA filter area	m²	20,8
HEPA classification		13
Dim. transport LxWxH	mm	1170 x 800 x 1730/1810
Dim. operating LxWxH	mm	1170 x 1240 x 1730/1810



### PPC 250 Electric Grinder

Single disc grinder, heavy-duty steel construction and easy to operate (single switch lever) with minimum maintenance. Efficient weight distribution for optimum performance. Additional weights provide greater impact on tough tasks. Diamonds are easily changed, minimising downtime. The ideal contractors' choice. Use with Dust Extraction.



**Weight:**  
145KG

**Motor:**  
5.5kw

**Dimensions:**  
• H 1200mm  
• L 1200mm  
• W 300mm



**Working Width:**  
250mm

**Power:**  
415v/3phase/32 amp

**Specification:**  
250-Electric-Grinder-Specification-The-Preparation-Group



# FLOOR GRINDERS

## DFG 250



**A successful diamond grinder must give the operator complete control and at the same time have enough weight to act directly onto the grinding heads to facilitate accurate and rapid grinding.**

The unique design of the DFG 250 has a ballast weight that can be removed, together with precise adjustment of the fulcrum for the rear wheels allows for perfect grinding in all types of situations. Environmental considerations are fully controlled with a uniquely designed dust extraction port and a facility for using water when grinding. Noise is kept to a minimum by use of high power 3 phase electric motors and drive belt systems. With low operational noise, little or no impact vibration, consistent diamond wear rates and ease of operation make the DFG 250 economical for floor preparation work.

### DFG 250

The DFG 250 is available in 3 phase electric or petrol engine and is ideally suited for the grinding of most types of concrete floors. The machine has a dust extraction port for dust free operation when used in conjunction with the SPE vacuums. The rear wheels are mounted on a pivoting axle which allows the weight and balance of the machine to be altered according to the job specification and requirements. To aid operator comfort the handle bars are mounted on rubber vibration damped clamps. The machine also has a facility for the application of water at the head when wet grinding is required.

### Twin Speed Option

The DFG 250 is also produced in a twin speed version giving operation speeds of 700 and 1400 r.p.m. The slower speed being designed and introduced for the grinding of terrazzo and marble applications when using the SPE polymer diamond system. Optional higher rpm head speeds are available upon request.



### Features

- Simple foot pedal to raise or lower machine during use.
- Anti-vibration handle bar mounts
- 50mm dust extraction port
- Dust free when used with SPE 316 vacuum
- Adjustable rear axle allows for two weighted settings.
- Screw type hand wheel allows machine to be set accurately to the surface.

### Applications

- Removal of dry crystallised (ATA) and wet adhesives
- Slurry grinding on water miscible products
- Provides superb preparation profile for thin film coatings (eliminates shadowing)
- Accurate grinding of large concrete areas
- Re-profiling of old concrete floors
- Removal of old coatings and contaminants
- Grinding and finishing of resin based terrazzo



Specifications		
Type	DFG 250 Electric	
Part Number	DFG 250 - 1	
Power output	5.5 kw	
Voltage	380/415	
Cycles	50hz	
Head speed r.p.m.	1400	
Engine/ motor speed r.p.m.	2800	
Machine Dimensions (mm)		
Length	1120	
Width	670	
Height	1040	
Weight (kg)	160	
Ballast weight (kg)	1x20	

Electrical Requirements						
Machine	Volts	Plug Size	Cable Size mm	Max Cable Length	Transformer	Generator
DFG 250 - 1	380/415	16 Amp 5 Pin	2.5 - 4 Core	75 metres	-	10kva
DFG 250 - 4	380/415	16 Amp 5 Pin	2.5 - 4 Core	75 metres	-	





# AUTOBLAST

## SPE 12E SUPER

The SPE 12E Super is a medium size Autoblaster machine suitable for all applications of floor surface preparation.

Mainly used for the preparation of concrete floors but equally effective on steel surfaces. The machine is electrically driven with forward and reverse drive being infinitely variable. The dust collection unit as with larger machines has continuous reverse air jet filtration cleaning. Recognised in the industry as the modern, fast, versatile, environmental dust free means to dry abrasive cleaning and texturing of horizontal or slightly inclined surfaces. This eliminates mess normally associated with hand blasting and leaves an ideal surface for coatings and overlays to be applied. Abrasive and debris is contained to prevent hazardous working and environmental pollution.



- ### Features

  - Blast unit constructed of manganese steel
  - Dust collector fitted with integral compressor and reverse air jet pulsation system to allow continuous working
  - Blasting width can be reduced for line removal and weld inspection
  - Self propelled variable speed drive allows complete operator control
  - Grill fitted into lower separator hopper unit assembly to eliminate foreign objects being allowed into the blastwheel causing damage
  - Capable of using upto S550 abrasive
  - Fully machined blastwheel support bearing assembly (eliminates bearing problems and automatically self aligns blastwheel components).
  - Blastwheel can be rotated in both directions (Optional extra)
  - Can be dismantled to pass through a 600mm access hole in storage tanks.

- ### Applications

  - Removal of old coatings
  - Exposing aggregates
  - Providing non-slip surfaces
  - Removing rubber deposits
  - Laitance removal on new concrete floors
  - Light texturing for thin coatings
  - Steel preparation to SA3 standard
  - Storage tanks roofs and floors
  - Ships decks • Steel plates • Foot bridges



Blastwheel Blades  
08001



Control cage  
08002



Impellor  
08003



Hood Liner  
08010



Side Liner Set  
RH 08008 LH 08009

Specification 12ES Blast Machine	
Type	Electric 3 phase
Part Number	SPE 12ES
Power Output Std Motor (higher optional available)	10hp
Voltage	380/415
Cycles	50/60
Cleaning Width (mm)	305
Machine Dimensions (mm)	
Width	480
Height	1200
Length	1180
Weight (kg)	320

Electrical Requirements						
Machine	Volts	Plug Size	Cable Size mm	Max Cable Length	Transformer	Generator
SPE 12ES	380/415	32 Amp 5 Pin	6.0 - 4 Core	100 metres	-	25kva







### S210 40R Shotblaster



The S210 40R is a compact powerful shot blaster for small to medium areas. The blasting process is fully enclosed ensuring a dust free application. The surface is prepared by steel abrasive propelled onto the surface at high velocity. The abrasive removes contamination and textures the surface in one process, the abrasive is then air washed / recycled into the hopper and the debris is removed by the connected dust collection vacuum. The machine is fitted with a variable speed drive system to ensure ease of use and a constant finish of profile.

#### Applications

- Cleaning and texturing
- Provides key for application of follow on materials
- Removal of old coatings
- Creating non slip finish
- Can be fitted with reduction plate for line marking preparation

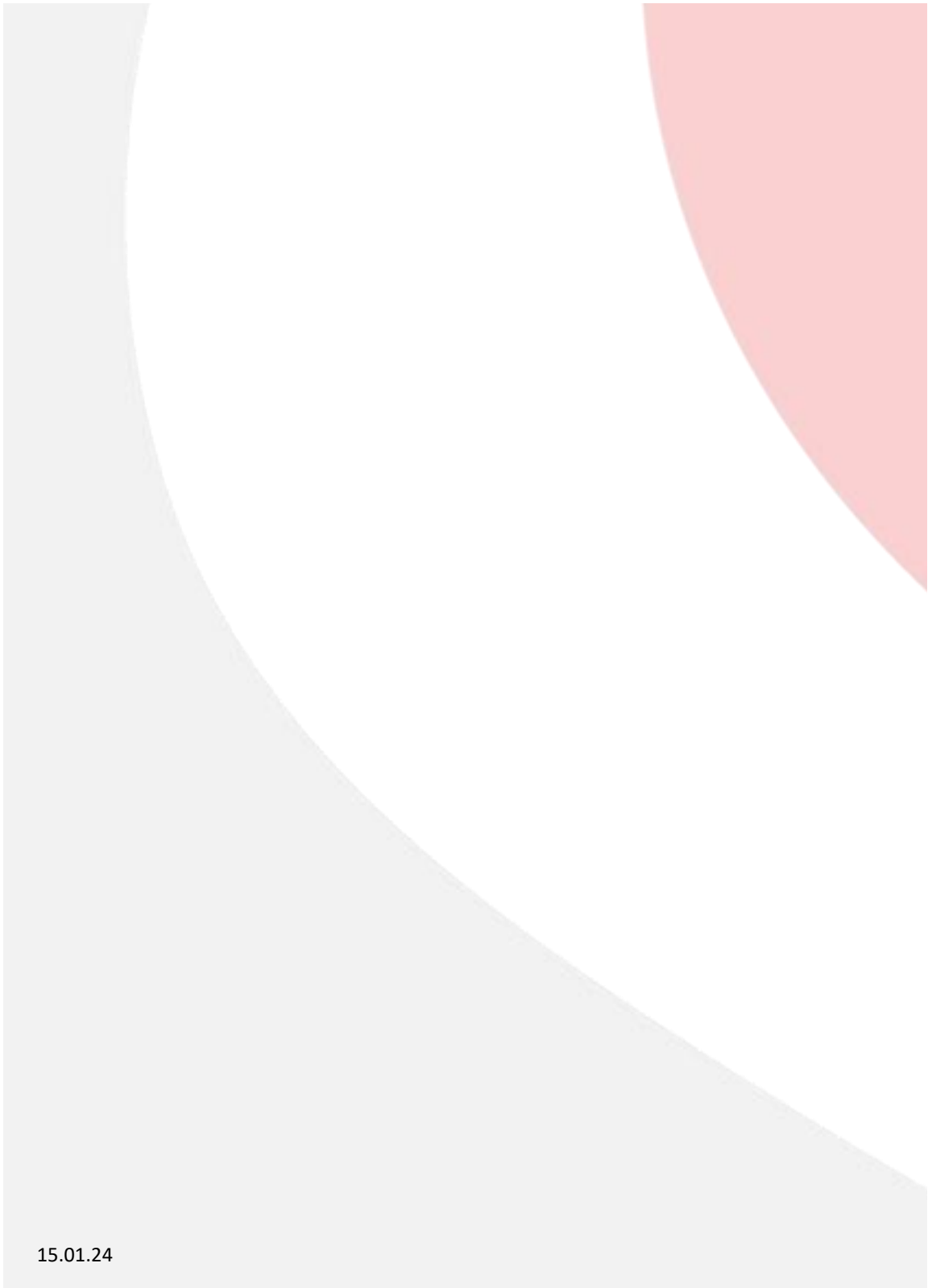
Model	S210 40R
Voltage	400v 3 phase
Power	4.0 kw
Cycles	50hz
Drive	Self propelled - 0-18mtr/min
Dimensions	W 30 x L 110 x h 100 cm
Weight	114 kg
Blast width	210mm
Output	Up to 80m2 p/hr on concrete



SPE BEF 320 Scarifier

BEF 320-1A	
Type	400 or 460v 3Ø
Power Output (hp/kw)	15 / 11.2
Cutter Head Speed (rpm)	933
Cutter Working Width (mm)	320
Working Distance From Wall (mm)	40
Length (mm/in)	1230 / 48.4
Width (mm/in)	590 / 23.2
Height (mm/in)	1220 / 48
Weight (kg/lb)	339 / 745.8





15.01.24



Seabrook Developments Ltd.  
Woodlands  
South Hanningfield Road  
South Hanningfield  
Chelmsford  
Essex  
CM3 8HQ

[www.seabrookdevelopments.com](http://www.seabrookdevelopments.com)

Please email your enquiry to the link below  
[quotes@seabrookdevelopments.com](mailto:quotes@seabrookdevelopments.com)





01245 403353

